
58 Years of Raising Seedstock

DAKITCH ANGUS & HEREFORD FARMS

Our Brand is Your Success
3rd Annual Bull Sale

SATURDAY, MARCH 25, 2017

at Dakitch Bull Development Farm - 1:00 p.m.

**D
K**

www.dakitchfarms.com

58 Years of Raising Seedstock

DAKITCH ANGUS & HEREFORD FARMS

Welcome!

On behalf of our family I invite you to join us for the Dakitch bull sale. We always look forward to the opportunity each year to present our best for our annual bull sale.

We spend a lot of time and spare no expense sourcing genetics to move our program and add value to your bottom line. We appreciate the opportunity to be your herd sire source.

The bulls have developed on their mothers milk and grass and a low ration creep feed. Which is an all natural feed source of rolled oats, corn and 18% corn gluten pellet. These cattle will continue to develop into sound, efficient seed stock for you. Only the best make the cut for the sale.

All the bulls are sound - no trimmed feet full herd health and guaranteed breeders. We expect them to be sound and predictable investment for years to come.

The cattle are available for viewing at anytime just give us a call or text or email.

I think the future is bright for beef business. There is renewed optimism and demand for high quality beef in the world. It is time to have the genetics and inventory in place to achieve the rewards. We appreciate your time and interest in Dakitch herd and our product. We invite you to join us on March 25th as we present our best. Join us for lunch and presale hospitality!! Remember sale starts at 1p.m. See you sale day.

Sincerely,
The Kitchell's
Matthew, Darci & Dawson
David & Lorie, Michael and Mason

matthewdkitchell@gmail.com

On behalf of the entire Kitchell family, I would like to welcome you to the 3rd Annual "Our brand is your Success" Bull Sale. I always look forward to this sale every year for many reasons. One reason is that I am thoroughly impressed with the quality of the bulls but more importantly, I am impressed by the cow families that back these bulls. If you haven't had a chance to go through this cow herd, rest assured that you won't find a more consistent set of brood momma cows anywhere in the Midwest. The biggest reason I enjoy coming every year is because the Kitchell's have become some of my greatest friends in this industry. They always put your best interest ahead of theirs and will treat you right. You won't regret doing business with them.

Whether you are coming for your next Hereford or Angus herd sire, I think you will easily find what you are looking for in this set. These bulls are sired by some of the brightest sires in each breed but more importantly, like I said earlier, they come from a long line of highly productive, functional and great uddered cows! Please don't hesitate to contact myself, Matthew or any member of the sales staff if you have any questions on the offering. I look forward to seeing you all again this year in Ada!

God bless
and travel safe!

Cody Crum
Auctioneer



*Find us on facebook or on the web
www.dakitchfarms.com*

DAKITCH ANGUS & HEREFORD FARMS

D K Our Brand is Your Success 3rd Annual Bull Sale

SATURDAY, MARCH 25, 2017

at Dakitch Bull Development Farm - 1997 355th St Ada, MN 56510 - 1:00 p.m.

Lunch will be served - 9 miles East of Ada, MN on Hwy 200 right along Hwy on South side. From Hwy 32 come West 1 mile on Hwy 200. Look for sign on South side.

SELLING:

24 Angus Yearlings

16 Polled Hereford Yearlings

5 2-year-old Polled Herefords

All videos can be viewed at DVAuction.

Auctioneer:

Cody Crum 217-248-7282

Sale day phones:

Matthew Kitchell 701-799-7690

David Kitchell 218-766-5628

Darci Kitchell 701-256-4094

Michael Kitchell 218-556-1263

Mason Kitchell 218-415-0935

Sale Representatives:

Levi Landers, American Hereford 308-730-1396

Alex Acheson, Farm & Ranch Guide 785-366-1185

Jay Elfeldt, Sales Consulting 308-293-3049

Marc and Jill Hotchkiss, Hereford America 605-490-1513 or 605-490-1409

Logan Hoffman, DV Auction 701-388-2618

Cody Crum, Livestock Plus 217-248-7282

Special Guests:

Kent Heins President MN Hereford Breeders

Dr. Dennis Lange Aurochs Vet Service

Dr. Delvin Salathe Embryo Vet

Sale Accommodations:

Norman Hotel 218-784-3781

Shooting Star Casino 218-935-2711

Also only 50 miles from Fargo, ND

For all your transfer needs:

Darci Kitchell 701-256-4094 or

..... email darci.kitchell@gmail.com

epds current as of 2/17/17.

DVAuction

Sale Terms and Conditions

Terms - Terms of the sale are cash or check payable during or after the sale and before cattle will be released. Cattle will not be transferred until paid in full. Each animal will be at buyers risk immediately after the animal is sold. Dakitch Farms will retaining 1/4 semen interest on each bull selling.

Guarantee - If animal fails to breed and is reported to seller by August 1, 2016. It may be returned to seller at buyers expense and to be in good condition and in compliance with Minnesota Health Regulations. Once the bull has been returned to the seller and confirmed that he is not a breeder, the buyer will have their choice to be refunded an animal of equal value if available or sale credit. If bull is tested to be a good breeder in 6 months of seller, buyer must pay all expenses to get bull.

Absentee Bidding - If you would like to place a bid but are unable to attend the sale, please direct your bid to any of the owners or sale staff. You may also bid online as the sale will be broadcast live on the internet at www.dvauction.com

Herd Health - All cattle will be sold in compliance with the health laws of the state of Minnesota. Health papers will be provided. Bulls will be tested for genetic defects by request at buyers expense.

Wintering and Delivery - Haul your bull the day of the sale and receive \$25 off. Free delivery on purchases of \$4,000 or more to any one location within a 300 mile radius. For any bulls going to Canada, we will deliver to nearest port of entry at our expense. Bulls can be kept free of charge until April 20th after will be charge \$3/day and all bulls must be picked up by May 1st.

Registration and Transfer - Registration certificates will be transferred to the buyer at sellers expense. Each buyer must be sure to give the clerk the proper name and address for making transfers.

Please Note - All persons who attend the sale do so at their own risk. Owners assume no liability, legal or otherwise for accidents or loss of property that may occur.

Insurance - Available on sale day or after. Northland Insurance - Joana Friesz 701-643-8744.

Embryo Transfer Program - Just short note here to advise you about some information on our ET program. Please remember that the calves that are ET calves may not perform the way the original ET mama cow does. Therefore, sometimes the performance of an ET calf is not as good as her natural calf is, but the genetics are still there to produce that type of performance.

Sight Unseen Guarantee - call Matthew for details.

— View photos and videos of bulls on our website www.dakitchfarms.com —

Angus Reference Sires



BAR-E-L IRONCLAD 177Y

Sire **BAR-E-L IRONCLAD 177Y**
 Registration #: 17292853 • Birthdate: 03/16/11

HF IRON MAN 167W
 HF KODIAK SR
 HF ROSEBUD 94P
 SANDY BAR ADVANTAGE 43M
 WILBAR RUBY 955N
 HF PROGRESS 20K
 HF ROSEBUD 198M

BAR-E-L DUCHESS 86T
 CRESCENT CREEK 06 RITO 50L
 BAR-E-L DUCHESS 119M
 CRESCENT CREEK REVIVAL 06J
 CRESCENT CREEK LASSIE 33H
 PLAINVIEW SAUGHATCHEE 31X
 BAR-E-L MAGNOLIA 143K

CED	BW	WW	YW	MILK	CEM	REA	MRB
-3	4.9	75	123	12	4	0.18	0.25

The Ironclad calves are just like we hoped for: long spined, big hipped and bone to burn just like their daddy. Ironclad is super deep sided with great hair and stems from possibly the most consistent cow families at Bar-E-L in Canada. We have many of the Ironclad females in production here at DaKitch and we are so pleased with their amazing udders, teat size and milking ability they consistently wean off the biggest calves. Ironclad is now deceased and these are the last set of calves we have to offer. 10 Sons sell.



KR CASH FLOW

Sire **KR CASH FLOW**
 Registration #: 17618508 • Birthdate: 03/01/13

BARSTOW CASH
 SITZ DASH 10277
 BARSTOW QUEEN W16
 SITZ UPWARD 307R
 SITZ EVERELDA ENTENSE 266S
 S A V FINAL ANSWER 0035
 RCA QUEEN R42

WK LASS 1591
 WK RETURN
 VERMILION LASS 0029
 WK VEGAS
 WK NACOMA 4394
 CONNEALY DATELINE
 VERMILION LASS 8107

CED	BW	WW	YW	MILK	CEM	REA	MRB
-6	4.1	66	113	20	6	0.97	0.25

Cash flow is one of the stoutest most correct sons of Barstow Cash and ranks in the top 5% of the Breed for WW, YW, RADG, YH, RA and \$F. Cash Flow was the lead will in the Reserve champion pen of Angus bulls at the 2014 National Western Stock Show. The Cash Flow calves came light at birth and hit the ground running weaning off exceptionally well! 6 Sons sell.



EATHINGTON SUB-ZERO

Sire **EATHINGTON SUB-ZERO**
 Registration #: 17379591 • Birthdate: 03/28/12

CONNEALY CAPITALIST 028
 S A V FINAL ANSWER 0035
 PRIDES PITA OF CONANGA 8821
 SITZ TRAVELER 8180
 S A V EMULOUS 8145
 C R A BEXTOR 872 5205 608
 PRIDES TRAV OF CONANGA 6499

KP MISS PROVEN QUEEN 21
 B C MATRIX 4132
 PVF ALL PROVEN QUEEN 503
 O C C EMBLAZON 854E
 CAF PURE PRIDE EXT 99
 W C C PRECISION E161 J239
 PVF PROVEN QUEEN 361

CED	BW	WW	YW	MILK	CEM	REA	MRB
19	-3.6	53	97	28	18	0.57	-0.05

Truly one of the unique calving ease, heifer bulls that won't sacrifice phenotype. Sub-Zero is deep bodied with top-notch muscle shape and he definitely passed that along to his offspring. We used him on our first calf heifers and we couldn't be more pleased with the results! Sub-Zero is backed by a genomic and EPD profile that is second to none ranging from a -3.6 on BW to a 98 on Yearling Weight EPD. He sired the heaviest WW bull this fall for us at 968 pounds check him out as lot 18! 3 Sons sell.



VISION UNANIMOUS 1418

Sire **VISION UNANIMOUS 1418**
 Registration #: 16992096 • Birthdate: 01/22/11

VISIONTOPLINE ROYAL STOCKMAN
 GAMBLER ROYAL FLUSH
 LAGRAND PRIDE 7140
 B C MARATHON 7022
 CHAMPION HILL LADY 703
 CONNEALY LEAD ON
 T C PRIDE 8002

VISION EDELLA 665
 BOYD ON TARGET 1083
 VISION EDELLA 337
 S A F 598 BANDO 5175
 BOYD FOREVER LADY 7095
 SYDGEN ON THE MARK
 VISION EDELLA 1045

CED	BW	WW	YW	MILK	CEM	REA	MRB
3	3.0	73	125	18	4	0.34	0.73

Unanimous has combined explosive performance, moderate BW, outstanding carcass profile and exceptional phenotype and structure. Posts explosive YW performance while maintaining moderate cow size and frame score as posted by his 13 MW and 0.3 MH EPDs. The Unanimous calves have really good feet. We have females in production and have nice udder quality and teat size. 2 Sons sell.

Angus Reference Sires



Sire

DAKITCH 23P PIONEER 81Z

Registration #: 17445902 • Birthdate: 03/09/12

S A V PIONEER 7301

S A V FINAL ANSWER 0035
S A V BLACKBIRD 5297

MS DA KITCH BARBIE 23P

BON VIEW NEW DESIGN 878
MS DAKITCH BARBIE 53M

SITZ TRAVELER 8180
S A V EMULOUS 8145
BOYD NEW DAY 8005
S A V BLACKBIRD 1082

B/R NEW DESIGN 036
BON VIEW GAMMER 85
OAKMERE 6807 TRAVELER 001
1959 FAR BARBIE 6842

CED	BW	WW	YW	MILK	CEM	REA	MRB
10	-0.9	36	69	25	13	0.55	0.32

81Z was a bull we kept a few years ago to use as clean up on our heifers and we were so pleased with his calves that we decided to run with the cows. 81Z calves come light birth weight and grow really well. They are smooth made, very functional cattle. Females in production do an exceptional job! 2 Sons sell.

Sire

THUNDER CREEK RIGHT ANSWER 9A

Registration #: 18404967 • Birthdate: 03/16/13

CONNEALY RIGHT ANSWER 746

S A V FINAL ANSWER 0035
HAPPY DELL OF CONANGA 262

THUNDER CREEK COUNTESS 21Y

S A V BISMARCK 5682
THUNDER CREEK COUNTESS 21W

SITZ TRAVELER 8180
S A V EMULOUS 8145
HYLINE RIGHT TIME 338
HAPPY DAZE OF CONANGA 6260

G A R GRID MAKER
S A V ABIGALE 0451
S A V FINAL ANSWER 0035
THUNDER CREEK COUNTESS 57T

CED	BW	WW	YW	MILK	CEM	REA	MRB
9	0.7	61	102	26	10	0.33	0.48

Right Answer 9A owns a higher degree of style, as he is erect through his front end and is clean down his front end and through his chest floor. He holds his head high on the move and stands on extra substance of bone. A really neat combination of calving ease, style, excellent EPD's and muscle all adds up to an excellent herd bull. Right Answer is used on clean up for our first calf heifers this year we only got one bull calf and his females are some of our favorites in the replacement pen. 1 Son sells.

AMERICAN ANGUS ASSOCIATION® SELECTION TOOLS

Expected Progeny Difference (EPD), is the prediction of how future progeny of each animal are expected to perform relative to the progeny of other animals listed in the database. EPDs are expressed in units of measure for the trait, plus or minus. Interim EPDs may appear on young animals when their performance has yet to be incorporated into the American Angus Association National Cattle Evaluation (NCE) procedures. This EPD will be preceded by an "I", and may or may not include the animal's own performance record for a particular trait, depending on its availability, appropriate contemporary grouping, or data edits needed for NCE.

Accuracy (ACC), is the reliability that can be placed on the EPD. An accuracy of close to 1.0 indicates higher reliability. Accuracy is impacted by the number of progeny and ancestral records included in the analysis.

GROWTH

Calving Ease Direct (CED), is expressed as a difference in percentage of unassisted births, with a higher value indicating greater calving ease in first-calf heifers. It predicts the average difference in ease with which a sire's calves will be born when he is bred to first-calf heifers.

Birth Weight EPD (BW), expressed in pounds, is a predictor of a sire's ability to transmit birth weight to his progeny compared to that of other sires.

Weaning Weight EPD (WW), expressed in pounds, is a predictor of a sire's ability to transmit weaning growth to his progeny compared to that of other sires.

Residual Average Daily Gain (RADG), feed efficiency expressed in pounds per day, is a predictor of a sire's genetic ability for postweaning gain in future progeny compared to that of other sires, given a constant amount of feed consumed.

Yearling Weight EPD (YW), expressed in pounds, is a predictor of a sire's ability to transmit yearling growth to his progeny compared to that of other sires.

Yearling Height EPD (YH), is a predictor of a sire's ability to transmit yearling height, expressed in inches, compared to the that of other sires.

Scrotal Circumference EPD (SC), expressed in centimeters, is a predictor of the difference in transmitting ability for scrotal size compared to that of other sires.

Docility (DOC), is expressed as a difference in yearling cattle temperament, with a higher value indicating more favorable docility. It predicts the average difference of progeny from a sire in comparison with another sire's calves.

MATERNAL

Heifer Pregnancy (HP), is a selection tool to increase the probability or chance of a sire's daughters becoming pregnant as first-calf heifers during a normal breeding season. A higher EPD is the more

favorable direction, and the EPD is reported in percentage units.

Calving Ease Maternal (CEM), is expressed as a difference in percentage of unassisted births with a higher value indicating greater calving ease in first-calf daughters. It predicts the average ease with which a sire's daughters will calve as first-calf heifers when compared to daughters of other sires.

Maternal Milk EPD (Milk), is a predictor of a sire's genetic merit for milk and mothering ability as expressed in his daughters compared to daughters of other sires. In other words, it is that part of a calf's weaning weight attributed to milk and mothering ability.

Mature Weight EPD (MW), expressed in pounds, is a predictor of the difference in mature weight of daughters of a sire compared to the daughters of other sires.

Mature Height EPD (MH), expressed in inches, is a predictor of the difference in mature height of a sire's daughters compared to daughters of other sires.

Cow Energy Value (\$EN), expressed in dollars savings per cow per year, assesses differences in cow energy requirements as an expected dollar savings difference in daughters of sires. A larger value is more favorable when comparing two animals (more dollars saved on feed energy expenses). Components for computing the cow \$EN savings difference include lactation energy requirements and energy costs associated with differences in mature cow size.

CARCASS

The genetic evaluation produces a single set of EPDs for carcass weight, marbling score, Ribeye area and fat thickness. The units of measure are in carcass trait format and analyzed on an age-constant basis.

Carcass Weight EPD (CW), expressed in pounds is a predictor of the differences in hot carcass weight of a sire's progeny compared to progeny of other sires.

Marbling EPD (Marb), expressed as a fraction of the difference in USDA marbling score of a sire's progeny compared to progeny of other sires.

Ribeye Area EPD (RE), expressed in square inches, is a predictor of the difference in ribeye area of a sire's progeny compared to progeny of other sires.

Fat Thickness EPD (Fat), expressed in inches, is a predictor of the differences in external fat thickness at the 12th rib (as measured between the 12th and 13th ribs) of a sire's progeny compared to progeny of other sires.

\$VALUE INDEXES

\$Value indexes, are multi-trait selection indexes to assist beef producers by adding simplicity to genetic

CONT. NEXT PAGE

Selection Tools/EPDs

selection decisions. \$Values are reported in dollars per head, where a higher value is more favorable. The \$Value is an estimate of how future progeny of each sire are expected to perform, on average, compared to progeny of other sires in the database if the sires were randomly mated to cows and if calves were exposed to the same environment.

Weaned Calf Value (\$W), an index value expressed in dollars per head, is the expected average difference in future progeny performance for preweaning merit. \$W includes both revenue and cost adjustments associated with differences in birth weight, weaning direct growth, maternal milk, and mature cow size.

Feedlot Value (\$F), an index value expressed in dollars per head, is the expected average difference in future progeny performance for postweaning merit compared to progeny of other sires.

Grid Value (\$G), an index value expressed in dollars per head, is the expected average difference in future progeny performance for carcass grid merit compared to progeny of other sires.

Quality Grade (\$QG) represents the quality grade segment of the economic advantage found in \$G. \$QG is intended for the specialized user wanting to place more emphasis on improving quality grade. The carcass marbling (Marb) EPD, which is influenced by carcass marbling scores and ultrasound percent intramuscular fat (% IMF) measurements, contribute to \$QG.

Yield Grade (\$YG) \$YG represents the yield grade segment of the economic advantage found in \$G. \$YG is intended for the specialized user wanting to place more emphasis on red meat yield. It provides a multi-trait approach to encompass ribeye, fat thickness and weight into an economic value for red meat yield.

\$G combines both \$QG and \$YG, and may be the best carcass decision tool for focusing on quality and red meat yield simultaneously.

Beef Value (\$B), an index value expressed in dollars per head, is the expected average difference in future progeny performance for postweaning and carcass value compared to progeny of other sires.

UNDERSTANDING HEREFORD EPDS

The American Hereford Association (AHA) currently produces expected progeny differences (EPDs) for 15 traits and calculates four profit (\$) indexes. Research is ongoing to develop traits for fertility, feed intake and docility. Today, DNA-marker tests can be used to enhance the accuracy of Hereford EPDs. AHA blends marker information with phenotypic information and pedigree to produce a GE-EPD. Look for the GE-EPD logo denoting an animal has been tested. The current suite of Hereford EPDs and \$ indexes includes:

Calving Ease – Direct (CE) CE EPD is based on calving ease scores and birth weights and is measured on a percentage. CE EPD indicates the influence of the sire on calving ease in females calving at 2 years of age. For example, if sire A has a CE EPD of 6 and sire B has a CE EPD of -2, then you would expect on average if comparably mated, sire A's calves would be born with an 8% more likely chance of being unassisted when compared to sire B's calves.

Birth Weight (BW) BW EPD is an indicator trait for calving ease and is measured in pounds. For example, if sire A has a BW EPD of 3.6 and sire B has a BW EPD of 0.6, then you would expect on average if comparably mated, sire A's calves would come 3 lb. heavier at birth when compared to sire B's calves. Larger BW EPDs usually, but not always, indicate more calving difficulty. The figure in parentheses found after each EPD is an accuracy value or reliability of the EPD.

Weaning Weight (WW) WW EPD is an estimate of pre-weaning growth that is measured in pounds. For example, if sire A has a WW EPD of 60 and sire B has a WW EPD of 40, then you would expect on average if comparably mated, sire A's calves would weigh 20 lb. heavier at weaning when compared to sire B's calves.

Yearling Weight (YW) YW EPD is an estimate of post-weaning growth that is measured in pounds. For example, if sire A has a YW EPD of 100 and sire B has a YW EPD of 70, then you would expect on average if comparably mated, sire A's calves would weigh 30 lb. heavier at a year of age when compared to sire B's calves.

Maternal Milk (MM) The milking ability of a sire's daughters is expressed in pounds of calf weaned. It predicts the difference in average weaning weights of sires' daughters' progeny due to milking ability. Daughters of the sire with a +14 MM EPD should produce progeny with 205-day weights averaging 24 lb. more (as a result of greater milk production) than daughters of a bull with a MM EPD of -10 lb. (14 minus -10.0 = 24 lb.). This difference in weaning weight is due to total milk production during the entire lactation.

Maternal Milk & Growth (M&G) Maternal Milk & Growth reflects what the sire is expected to transmit to his daughters for a combination of growth genetics through weaning and genetics for milking ability. It is an estimate of daughters' progeny weaning weight. A bull with a 29 lb. M&G EPD should sire daughters with progeny weaning weights averaging 19 lb. heavier than progeny of a bull's daughters with a M&G EPD of 10 lb. (29 minus 10 = 19 lb.). It is equal to one-half the sire's weaning weight EPD, plus all of his MM EPD. No accuracy is associated with this since it is simply a mathematical combination of two other EPDs. It is sometimes referred to as "total maternal" or "combined maternal."

Maternal Calving Ease (MCE) MCE EPD predicts how easily a sire's daughters will calve at 2 years of age and is measured on a percentage. For example, if sire A has a MCE EPD of 7 and sire B has a CE EPD of -3, then you would expect on average if comparably mated, sire A's daughters would calve with a 10% more likely chance of being unassisted when compared to sire B's daughters.

Mature Cow Weight (MCW) The MCW EPD was designed to help breeders select sires that will either increase or decrease mature size of cows in the herd. The trait was developed after years of cow weight data collection and the EPD relates directly to the maintenance requirements of a cow herd. For example, if sire A has a MCW EPD of 100 and sire B has an EPD of 85, then you would expect the females of sire A, if mated to similar cows, to be 15 lb. heavier at mature size.

Udder suspension (UDDR) UDDR EPDs are reported on a 9 (very tight) to 1 (very pendulous) scoring scale. Differences in sire EPDs predict the difference expected in the sires' daughters' udder characteristics when managed in the same environment. For example, if sire A has a UDDR EPD of 0.4, and sire B has a UDDR EPD of -0.1, the difference in the values is 0.5, or one-half of a score. If daughters of sires A and B are raised and managed in the same environment, you would expect half a score better udder suspension in daughters of sire A, compared to sire B.

Teat size (TEAT) TEAT EPDs are reported on a 9 (very small) to 1 (very large, balloon shaped) scoring scale. Differences in sire EPDs predict the difference expected in the sires' daughters' udder characteristics when managed in the same environment. For example, if sire A has a teat size EPD of 0.4, and sire B has a teat size EPD of -0.1, the difference in the values is 0.5, or one-half of a score. If daughters of sires A and B are raised and managed in the same environment, you would expect half a score smaller teat size in daughters of sire A, compared to sire B.

Scrotal Circumference (SC) Measured in centimeters and adjusted to 365 days of age, SC EPD is the best estimate of fertility. It is related to the bull's own semen quantity and quality, and is also associated with age at puberty of sons and daughters. Larger SC EPDs suggest younger age at puberty. Yearling sons of a sire with a .7 SC EPD should have yearling scrotal circumference measurements that average 0.7 centimeters (cm) larger than progeny by a bull with an EPD of 0.0 cm.

Carcass Weight (CW) Carcass weight is a beneficial trait when considering the impact that pounds have relative to end product value. At the same age constant endpoint, sires with higher values for carcass weight will add more pounds of hot carcass weight compared to sires with lower values for carcass weight. For example, if sire A has a CW EPD of 84 and sire B has a CW EPD 64, then you would expect the progeny of sire A, if harvested at the same age constant endpoint, to have a 20-lb. advantage in terms of hot carcass weight.

Rib Fat (FAT) The FAT EPD reflects differences in adjusted 365-day, 12th-rib fat thickness based on carcass measurements of harvested cattle. Sires with low, or negative FAT EPDs are expected to produce leaner progeny than sires with higher EPDs. Ultrasound measures are also incorporated into this trait and have been shown to be highly correlated with the performance of slaughter progeny. All data is expressed on a carcass scale.

Ribeye Area (REA) REA EPDs reflect differences in an adjusted 365-day ribeye area measurement based on carcass measurements of harvested cattle. Sires with relatively higher REA EPDs are expected to produce better muscled and higher percentage yielding slaughter progeny than will sires with lower REA EPDs. Ultrasound measurements are also incorporated into this trait and have been shown to be highly correlated with the performance of slaughter progeny. All data is expressed on a carcass scale.

Marbling (MARB) MARB EPDs reflect differences in an adjusted 365-day marbling score (intramuscular fat, (IMF)) based on carcass measurements of harvested cattle. Breeding cattle with higher MARB EPDs should produce slaughter progeny with a higher degree of IMF and therefore higher quality grades. Ultrasound measurements are also incorporated into this trait and have been shown to be highly correlated with the performance of slaughter progeny. All data is expressed on a carcass scale.

Baldie Maternal Index (BMI\$) BMI\$ is a maternally focused index that has a production system based on 1,000-Hereford x Angus females with a progeny harvest endpoint directed toward Certified Hereford Beef (CHB®). This index is more critical of CE than the Brahman Influence Index (BI\$) and also has significant weight on fertility. There is positive weight on WW and a slightly negative weight on YW, which promotes early growth and then a slow down on growth to keep mature size manageable. The emphasis of IMF is greater than the emphasis of REA. This is true because of the price difference of the Choice-Select spread and the fact that there is very little incentive to produce cattle better than a Yield Grade 3. This index is geared to service any commercial program that has Britishcross cows.

Calving Ease Index (CEZ\$) This is a general purpose index that focuses on identifying bulls that can be used on heifers and then ultimately the calves will be marketed through the CHB program. As you might expect, CE and MCE carry significant weight in this index along with fertility. There is very little weight put on growth traits and less emphasis on carcass. Remember, this is a general index that is specifically designed to be used in a heifer program.

Brahman Influence Index (BI\$) BI\$ is a maternally focused index that is based on a 1,000-head cow herd of Brahman x Hereford cows. The progeny for this index will be harvested in a commodity-based system since CHB does not accept Brahman-influenced cattle into the program. This index has less emphasis for CE than any of the other indexes. There is emphasis on both REA and IMF since the cattle will be harvested through a commodity market. The largest emphasis is in fertility, which is measured solely by SC at the present time. Obviously, the target for this index is the producers in the Southern regions of the U.S. where the bulls are typically sold to commercial cattlemen that have Brahman-influenced cow herds.

Certified Hereford Beef Index (CHB\$) This is a terminal sire index that is built on a production system where Hereford bulls sire calves for the CHB market. There is some pressure put on CE and then positive weight on both WW and YW. Remember that all offspring in this index are harvested, so they need to be born alive and then grow fast at all stages of life. Of course, we have much more emphasis on fat in this index, as we want the cattle to stay lean. There is also a significant weight on both REA and IMF with more emphasis again on IMF. This index would be used by producers who have a target of producing bulls for a terminal breeding program. It could be used heavily in the Midwest where bulls are used in rotational breeding programs to produce cattle in a retained ownership program or are simply sold to backgrounders. This is the only index that has no emphasis on fertility. Remember that nothing is retained in the herd.

Hereford Reference Sires



Sire

EXR CROSSROADS 466 ET

Registration #: P43459590 • Birthdate: 02/04/14

KCF BENNETT 3008 M326
NJW 73S M326 TRUST 100W ET
NJW P606 72N DAYDREAM 73S

RRH MR FELT 3008
KCF MISS 459 F284
PW VICTOR BOOMER P606
NJW 94J DEW 72N

TH 223 711 VICTOR 755T
TH 90W 755T MS DOM 28Z
TH 618 45P MS DOM 90W

DRF JWR PRINCE VICTOR 711
KBCR 19D DOMINETTE 223
NJW FHF 9710 TANK 45P
KBCR P606 MS DOM 618

CED	BW	WW	YW	MILK	M&G	REA	MRB
-0.6	4.4	74	116	35	72	1.01	0.28

Crossroads has become a leading herd sire for us with no question - his calves are the highlight of the calf crop. He adds length and extra testicle development. His pedigree has many leading females in it: 90W, 618 and 73S. His mother is a powerful donor at Express Ranch in OK. Crossroads ratios WW 106.4 on his first calf crop. 6 Sons sell.



Sire

TH 400U 32X TRUMP 206Z

Registration #: P43269879 • Birthdate: 03/29/12

HARVIE RAFTSMAN 16R
HAROLDSONS TRUMP 16R ET 32X
HAROLDSONS 37H MIRA ET 62K

HARVIE LADIES MAN 4L
HARVIE MISS FIREFLY 51F
REMITALL HOLLYWOOD 37H
HAROLDSONS CU DESTINY 2Z 19G

NJW FHF 9710 TANK 45P
TH 605F 45P PRIMROSE 400U ET
YY 125Y PRIMROSE 605F

FHF 8403 STARBUCK 19H
GV 579 VICTORIA 9710
DAVIS 81W TOP CAT ET 125Y
CFCW MS ENERGZR LECTRC 5B

CED	BW	WW	YW	MILK	M&G	REA	MRB
-2.4	3.9	68	106	25	59	0.69	0.08

206Z is a second to none for phenotype. He has a huge sweep to his middle, super stout, and very sharp fronted. We have the privilege of owning his dam and she is one of the best uddered cows walking in the herd. Take note of all the other tremendous uddered females in his pedigree. Trump daughters in production are just blowing us away with the udder quality. 7 Sons sell.



Sire

NJW 78P TWENTYTWELVE 190Z ET

Registration #: P43330597 • Birthdate: 09/09/12

KCF BENNETT 3008 M326
NJW 73S M326 TRUST 100W ET
NJW P606 72N DAYDREAM 73S

RRH MR FELT 3008
KCF MISS 459 F284
PW VICTOR BOOMER P606
NJW 94J DEW 72N

RU 20X BOULDER 57G
NJW BW LADYSPORT DEW 78P ET
SADDLEVLV LADYSPORT 120

REMITALL KEYNOTE 20X
RU 10A DEW 57D
RU DUSTER 60D
GK LADYSPORT 131A

CED	BW	WW	YW	MILK	M&G	REA	MRB
-9.6	6.3	56	108	33	61	1.14	0.04

190Z is a homozygous polled bull that topped the 2014 NJW Polled Herefords Sale. He is an elite son of the National Western Stock Show Supreme Champion, Trust, out of one of the best cows in the breed, 78P. He is commanding, eye-catching and powerful, yet smooth and clean in his lines. From behind, he is very wide and expressive with as much color and pigment as you will find. 190Z sired the biggest REA son in the sale check him out as lot 36! 2 Sons sell.



Sire

ASM 980 BELIEVE 204Z

Registration #: P43336967 • Birthdate: 01/02/12

GO L18 EXCEL T31
CRR HELTON 980
CRR 9B JULIANNE 40S

GO EXCEL L18
GO MS 3196 ADVANCE R134
C&L DOUBLE TIME 452M 9B
CRR D03 JULIANNE 217

REMITALL ONLINE 122L
ASM 122L MISS 801ET
KSU MISS 6052F 308 ET

REMITALL EMBRACER 8E
REMITALL CATALINA 24H
HH ADVANCE 6052F
MISS MARK K 111

CED	BW	WW	YW	MILK	M&G	REA	MRB
-2.3	5.3	61	98	24	54	0.30	0.10

Believe is the 2014 Western Nugget Grand Champion Polled Hereford Bull. Sired by the American Royal Grand champion bull, Helton. He is an elite, high performing and marbling sire with a maternal pedigree backed by the female maker, Online and the elite 308F cows from KSU, who is an own daughter of the immortal, Miss K 111. We used him on our lead donor 95S and we got just what we hoped for. Fully pigmented, high performing bulls that are sure to add pounds to their calf crops. 2 Sons sell.

Angus Bulls



Lot
1

DAKITCH 124A IRONCLAD 57D

Registration #: 18517521 • Birthdate: 02/16/16

BAR-E-L IRONCLAD 177Y

HF IRON MAN 167W
BAR-E-L DUCHESS 86T

HF KODIAK 5R
HF ROSEBUD 94P
CRESCENT CREEK 06 RITO 50L
BAR-E-L DUCHESS 119M

DA KITCH 30P TRUE GRIT 42X
MS DAKITCH EILEENMERE 124A
MS DA KITCH EILEENMERE 146Y

S A V PIONEER 7301
MS DA KITCH ANNIE 30P
T B DOMINATOR 818
MS DA KITCH EILEENMERE 7U

ACT BW
78
ACT WW
948
ADJ WW
919
2/5/17 WT
1350

CED	BW	WW	YW	MILK	CEM	REA	MRB
3	1.9	69	110	23	7	0.27	0.19
IMF	RIBEYE AREA		RIB FAT		RUMP FAT		
ACT	ADJ	ACT	ADJ	ACT	ADJ	ACT	ADJ
3.23	3.27	14.3	14.6	0.28	0.29	0.34	0.35

Mothers Ratios: BW 2 at 101 WW 2 at 114.

Lot
2

DAKITCH MDK53X IRONCLAD 143D

Registration #: 18517528 • Birthdate: 03/17/16

BAR-E-L IRONCLAD 177Y

HF IRON MAN 167W
BAR-E-L DUCHESS 86T

HF KODIAK 5R
HF ROSEBUD 94P
CRESCENT CREEK 06 RITO 50L
BAR-E-L DUCHESS 119M

S A V NET WORTH 4200
MS DAKITCH 23S QUEEN EVA 53X
MS DA KITCH QUEEN EVA 23S

S A V 8180 TRAVELER 004
S A V MAY 2410
TC FREEDOM 104
MS DA KITCH QUEEN EVA 82L

ACT BW
89
ACT WW
830
ADJ WW
852
2/5/17 WT
1270

CED	BW	WW	YW	MILK	CEM	REA	MRB
-1	4.3	65	109	23	6	0.26	0.4
IMF	RIBEYE AREA		RIB FAT		RUMP FAT		
ACT	ADJ	ACT	ADJ	ACT	ADJ	ACT	ADJ
3.45	3.6	14.2	15.1	0.2	0.24	0.16	0.2

Mothers Ratios: BW 4 at 112 WW 4 at 108 YW 3 at 106.

Lot
3

DAKITCH 12W IRONCLAD 134D

Registration #: 18517525 • Birthdate: 03/13/16

BAR-E-L IRONCLAD 177Y

HF IRON MAN 167W
BAR-E-L DUCHESS 86T

HF KODIAK 5R
HF ROSEBUD 94P
CRESCENT CREEK 06 RITO 50L
BAR-E-L DUCHESS 119M

S A V NET WORTH 4200
MS DA KITCH 102P BONNY 12W
MS DA KITCH BONNY 102P

S A V 8180 TRAVELER 004
S A V MAY 2410
OAKMERE 6807 TRAVELER 001
MS DAKITCH BONNY 25M

ACT BW
88
ACT WW
916
ADJ WW
927
2/5/17 WT
1265

CED	BW	WW	YW	MILK	CEM	REA	MRB
0	3.7	68	104	21	7	0.27	0.44
IMF	RIBEYE AREA		RIB FAT		RUMP FAT		
ACT	ADJ	ACT	ADJ	ACT	ADJ	ACT	ADJ
3.87	4.01	14.2	14.9	0.2	0.23	0.21	0.24

Pathfinder dam. Mothers Ratios: BW 6 at 99 WW 6 at 109 YW 4 at 98.



Lot
4

DAKITCH 46A IRONCLAD 102D

Registration #: 18708861 • Birthdate: 03/05/16

BAR-E-L IRONCLAD 177Y

HF IRON MAN 167W
BAR-E-L DUCHESS 86T

HF KODIAK 5R
HF ROSEBUD 94P
CRESCENT CREEK 06 RITO 50L
BAR-E-L DUCHESS 119M

BELVIN TRES MARIAS PATRON205
MS DAKITCH 57T BARBIE 46A
MS DA KITCH BARBIE 57T

ALSTON 5384 CATRIEL F
TRES MARIAS6764ROSANEGRA5214
TC FREEDOM 104
MS DA KITCH BARBIE 64L

ACT BW
80
ACT WW
905
ADJ WW
927
2/5/17 WT
1235

CED	BW	WW	YW	MILK	CEM	REA	MRB
4	3.1	56	95	12	8		
IMF	RIBEYE AREA		RIB FAT		RUMP FAT		
ACT	ADJ	ACT	ADJ	ACT	ADJ	ACT	ADJ
4.18	4.29	12.7	13.2	0.31	0.33	0.23	0.25

Mothers Ratios: BW 1 at 100 WW 1 at 100.

Lot
5

DAKITCH 59U IRONCLAD 148D

Registration #: 18517527 • Birthdate: 03/18/16

BAR-E-L IRONCLAD 177Y

HF IRON MAN 167W
BAR-E-L DUCHESS 86T

HF KODIAK 5R
HF ROSEBUD 94P
CRESCENT CREEK 06 RITO 50L
BAR-E-L DUCHESS 119M

TC FREEDOM 104
MS DA KITCH MEG 59U
MS DA KITCH MEG 97L

CONNELLY FOREFRONT
T C RUBY 9095
A B C WHIRLWIND 3218
C A R LADY MEG 88

ACT BW
89
ACT WW
792
ADJ WW
816
2/5/17 WT
1190

CED	BW	WW	YW	MILK	CEM	REA	MRB
-1	4.4	59	99	19	5	0.05	0.15
IMF	RIBEYE AREA		RIB FAT		RUMP FAT		
ACT	ADJ	ACT	ADJ	ACT	ADJ	ACT	ADJ
3.22	3.38	13.2	14.1	0.16	0.2	0.27	0.31

Mothers Ratios: BW 6 at 103 WW 6 at 104 YW 5 at 105.

Lot
6

DAKITCH 134A IRONCLAD 75D

Registration #: 18517522 • Birthdate: 02/26/16

BAR-E-L IRONCLAD 177Y

HF IRON MAN 167W
BAR-E-L DUCHESS 86T

HF KODIAK 5R
HF ROSEBUD 94P
CRESCENT CREEK 06 RITO 50L
BAR-E-L DUCHESS 119M

T B DOMINATOR 818
MS DAKITCH 3T MINDY 134A
MS DA KITCH MINDY 3T

TC FREEDOM 526
TC PEG 4077
TC FREEDOM 104
MS DAKITCH MINDY 94M

ACT BW
86
ACT WW
742
ADJ WW
749
2/5/17 WT
1180

CED	BW	WW	YW	MILK	CEM	REA	MRB
0	3.7	56	98	19	5	0.2	0.19
IMF	RIBEYE AREA		RIB FAT		RUMP FAT		
ACT	ADJ	ACT	ADJ	ACT	ADJ	ACT	ADJ
3.52	3.6	13.7	14.1	0.18	0.2	0.48	0.5

Mothers Ratios: BW 1 at 109 WW 1 at 98.

Angus Bulls



Lot 7
DAKITCH MDK15W IRONCLADE152D
 Registration #: 18517526 • Birthdate: 03/20/16

HF IRON MAN 167W
 BAR-E-L IRONCLAD 177Y
 BAR-E-L DUCHESS 86T

HF KODIAK 5R
 HF ROSEBUD 94P
 CRESCENT CREEK 06 RITO 50L
 BAR-E-L DUCHESS 119M

B C MATRIX 4132
 MS DA KITCH BLACKCAP 15W
 MS DA KITCH BLACKCAP 15T

O C C EMBLAZON 854E
 CAF PURE PRIDE EXT 99
 QLC LAGRANDE FORUM
 MS DA KITCH BLACKCAP 12L

CED	BW	WW	YW	MILK	CEM	REA	MRB	ACT BW
0	3.9	68	110	21	4	0.42	0.19	85
								ACT WW
								836
								ADJ WW
								869
								2/5/17 WT
								1185

Pathfinder dam. Mothers Ratios: BW 6 at 101 WW 6 at 111 YW 5 at 109.



ASHLEY ROHR 2016 SUMMER INTERN,
 UNIVERSITY OF MINNESOTA CROOKSTON

Lot 8
DAKITCH 48A IRONCLAD 120D
 Registration #: 18517524 • Birthdate: 03/10/16

HF IRON MAN 167W
 BAR-E-L IRONCLAD 177Y
 BAR-E-L DUCHESS 86T

HF KODIAK 5R
 HF ROSEBUD 94P
 CRESCENT CREEK 06 RITO 50L
 BAR-E-L DUCHESS 119M

BELVIN TRES MARIAS PATRON205
 MS DAKITCH BLACK LADY 48A
 MS DA KITCH BLACK LADY 15T

ALSTON 5384 CATRIEL F
 TRES MARIAS674ROSANEGRA5214
 TC FREEDOM 104
 TOKACH BLACK LADY 9629

CED	BW	WW	YW	MILK	CEM	REA	MRB	ACT BW
5	3.1	59	102	13	8	-0.02	0.38	84
								ACT WW
								700
								ADJ WW
								738
								2/5/17 WT
								1055

Mothers Ratios: BW 2 at 100 WW 2 at 101 YW 1 at 104.



Lot 9
DAKITCH 35R IRONCLAD 141D
 Registration #: 18517529 • Birthdate: 03/12/16

HF IRON MAN 167W
 BAR-E-L IRONCLAD 177Y
 BAR-E-L DUCHESS 86T

HF KODIAK 5R
 HF ROSEBUD 94P
 CRESCENT CREEK 06 RITO 50L
 BAR-E-L DUCHESS 119M

BALDRIDGE NEBRASKA 901
 MS DA KITCH QUEEN EVA 35R
 MS DA KITCH QUEEN EVA 35N

S A F FOCUS OF E R
 BALDRIDGE FLOSSIE 367
 TC DIVIDEND 963
 MS DA KITCH QUEEN EVA 82L

CED	BW	WW	YW	MILK	CEM	REA	MRB	ACT BW
3	2.8	55	95	19	9	0.11	0.29	85
								ACT WW
								738
								ADJ WW
								766
								2/5/17 WT
								1120

Pathfinder dam. Mothers Ratios: BW 9 at 92 WW 9 at 104 YW 6 at 104.

Lot 10
DAKITCH 68A IRONCLAD 20D
 Registration #: 18692846 • Birthdate: 01/31/16

HF IRON MAN 167W
 BAR-E-L IRONCLAD 177Y
 BAR-E-L DUCHESS 86T

HF KODIAK 5R
 HF ROSEBUD 94P
 CRESCENT CREEK 06 RITO 50L
 BAR-E-L DUCHESS 119M

T B DOMINATOR 818
 MS DAKITCH 111N EVA 68A
 MS DA KITCH EVA 111N

TC FREEDOM 526
 TC PEG 4077
 OAKMERE 6807 TRAVELER 001
 H A QUEEN EVA 953

CED	BW	WW	YW	MILK	CEM	REA	MRB	ACT BW
-2	4.4	44	79	15	5	0.08	0.31	88
								ACT WW
								646
								ADJ WW
								618
								2/5/17 WT
								1026

Mothers Ratios: BW 2 at 109 WW 2 at 88 YW 2 at 89.

Lot 11
DAKITCH MDK152Y CASHFLOW 64D
 Registration #: 18563603 • Birthdate: 02/20/16

BARSTOW CASH
 WK LASS 1591

SITZ DASH 10277
 BARSTOW QUEEN W16
 WK RETURN
 VERMILION LASS 0029

T B DOMINATOR 818
 MS DAKITCH MDK XENA 152Y
 MS DA KITCH M D K XENA 63U

TC FREEDOM 526
 TC PEG 4077
 TC FREEDOM 104
 X C R XENA K033

CED	BW	WW	YW	MILK	CEM	REA	MRB	ACT BW
2	2.3	51	91	22	9	0.46	0.16	79
								ACT WW
								700
								ADJ WW
								660
								2/5/17 WT
								1015

Suitable for heifers. Mothers Ratios: BW 4 at 103 WW 4 at 99 YW 1 at 120.

Angus Bulls



Lot
12

DAKITCH 156X CASH FLOW 107D

Registration #: 18563605 • Birthdate: 03/07/16

KR CASH FLOW

BARSTOW CASH

WK LASS 1591

SITZ DASH 10277
BARSTOW QUEEN W16
WK RETURN
VERMILION LASS 0029

T B DOMINATOR 818
MS DAKITCH EILEENMERE 156X
MSDAKITCH LADY EILEENMERE20T

TC FREEDOM 526
TC PEG 4077
TC STOCKMAN 365
TOKACH LADY EILEENMERE 9883

CED	BW	WW	YW	MILK	CEM	REA	MRB
3	1.6	58	98	23	10	0.65	0.14
IMF	RIBEYE AREA		RIB FAT		RUMP FAT		
ACT	ADJ	ACT	ADJ	ACT	ADJ	ACT	ADJ
2.46	2.58	15.1	15.6	0.21	0.23	0.23	0.25

ACT BW
80
ACT WW
830
ADJ WW
822
2/5/17 WT
1210

Mothers Ratios: BW 4 at 102 WW 4 at 102 YW 2 at 91.



DAYMIN PLEUNE
FULL TIME FARM
AND RANCH
HAND, THANK
YOU FOR YOUR
LOYAL HELP!

Lot
13

DAKITCH 44X CASH FLOW 56D

Registration #: 18563609 • Birthdate: 02/16/16

KR CASH FLOW

BARSTOW CASH

WK LASS 1591

SITZ DASH 10277
BARSTOW QUEEN W16
WK RETURN
VERMILION LASS 0029

PVF ALL PAYDAY 729
MS DA KITCH 97L MEG 44X
MS DA KITCH MEG 97L

S A V PAYROLL 5281
P V F BLACKBIRD 201
A B C WHIRLWIND 3218
C A R LADY MEG 88

CED	BW	WW	YW	MILK	CEM	REA	MRB
-4	3.5	52	91	18	5	0.55	0.2
IMF	RIBEYE AREA		RIB FAT		RUMP FAT		
ACT	ADJ	ACT	ADJ	ACT	ADJ	ACT	ADJ
3.42	3.46	13.1	13.3	0.24	0.25	0.23	0.24

ACT BW
89
ACT WW
788
ADJ WW
735
2/5/17 WT
1130

Mothers Ratios: BW 3 at 108 WW 3 at 96 YW 2 at 98.



Lot
14

DAKITCH MDK 1U CASH FLOW 86D

Registration #: 18563616 • Birthdate: 03/01/16

KR CASH FLOW

BARSTOW CASH

WK LASS 1591

SITZ DASH 10277
BARSTOW QUEEN W16
WK RETURN
VERMILION LASS 0029

LEMMON NEWSLINE C804
MS DA KITCH M D K FAITH 1U
K M D MISS FAME 982

B/R NEW DESIGN 036
WHITE FENCE PRIDE H1
S A F FAME
K M D EXT 201G

CED	BW	WW	YW	MILK	CEM	REA	MRB
0	2.3	49	81	24	8	0.59	0.27
IMF	RIBEYE AREA		RIB FAT		RUMP FAT		
ACT	ADJ	ACT	ADJ	ACT	ADJ	ACT	ADJ
3.66	3.75	13.4	13.9	0.16	0.18	0.16	0.18

ACT BW
84
ACT WW
750
ADJ WW
729
2/5/17 WT
1120

Mothers Ratios: BW 7 at 107 WW 7 at 101 YW 4 at 102.



Lot
15

DAKITCH 46X CASH FLOW 70D

Registration #: 18688303 • Birthdate: 02/24/16

KR CASH FLOW

BARSTOW CASH

WK LASS 1591

SITZ DASH 10277
BARSTOW QUEEN W16
WK RETURN
VERMILION LASS 0029

S A V MANDAN 5664
MS DA KITCH 28P BARBIE 46X
MS DA KITCH 864 BARBIE 28P

S A V 8180 TRAVELER 004
S A V ABIGALE 0451
KRUGERRAND OF DONAMERE 490
C A R BARBIE 864

CED	BW	WW	YW	MILK	CEM	REA	MRB
1	1.6	56	98	24	8	0.96	0.36
IMF	RIBEYE AREA		RIB FAT		RUMP FAT		
ACT	ADJ	ACT	ADJ	ACT	ADJ	ACT	ADJ
3.98	4.05	16.7	17	0.2	0.22	0.28	0.3

ACT BW
79
ACT WW
814
ADJ WW
776
2/5/17 WT
1180

Mothers Ratios: BW 4 at 103 WW 4 at 108 YW 3 at 102.

Angus Bulls



Lot 16

DAKITCH 25Z CASH FLOW 49D

Registration #: 18563601 • Birthdate: 02/14/16

KR CASH FLOW

BARSTOW CASH

WK LASS 1591

SITZ DASH 10277
BARSTOW QUEEN W16
WK RETURN
VERMILION LASS 0029

S00 LINE MOTIVE 9016

MS DAKITCH EILEENMERE 25Z

MS DAKITCH EILEENMERE 126X

HF KODIAK 5R
TLA BEAUTY 5R
T B DOMINATOR 818
MS DA KITCH EILEEMERE 40T

CED	BW	WW	YW	MILK	CEM	REA	MRB
3	1.8	53	91	23	8	0.46	0.32
IMF	RIBEYE AREA		RIB FAT		RUMP FAT		
ACT	ADJ	ACT	ADJ	ACT	ADJ	ACT	ADJ
3.87	3.9	12.9	13.5	0.25	0.28	0.34	0.36

ACT BW

60

ACT WW

804

ADJ WW

811

2/5/17 WT

1150

Mothers Ratios: BW 2 at 93 WW 2 at 95 YW 2 at 89.



Lot 17

Lot 17

DAKITCH 33B SUB ZERO 29D

Registration #: 18548165 • Birthdate: 02/03/16

EATHINGTON SUB-ZERO

CONNEALY CAPITALIST 028

KP MISS PROVEN QUEEN 21

S A V FINAL ANSWER 0035
PRIDES PITA OF CONANGA 8821
B C MATRIX 4132
PVF ALL PROVEN QUEEN 503

BUSH UNBELIEVABLE423

MS DAKITCH 118Z BARBIE 33B

MS DAKITCH 29X BARBIE 118Z

S A V BISMARCK 5682
BUSH BLACKBIRD 8708
DA KITCH 30P TRUE GRIT 42X
MS DA KITCH 55 BARBIE 29X

CED	BW	WW	YW	MILK	CEM	REA	MRB
11	0.2	52	93	29	13	0.56	0.18
IMF	RIBEYE AREA		RIB FAT		RUMP FAT		
ACT	ADJ	ACT	ADJ	ACT	ADJ	ACT	ADJ
3.28	3.27	14.3	14.4	0.19	0.2	0.23	0.24

ACT BW

79

ACT WW

810

ADJ WW

798

2/5/17 WT

1175

Suitable for heifers. Mothers Ratios: BW 1 at 106 WW 1 at 105.



Lot 18

Lot 18

DAKITCH MDK DIESEL POWER 4D

Registration #: 18548170 • Birthdate: 01/24/16

EATHINGTON SUB-ZERO

CONNEALY CAPITALIST 028

KP MISS PROVEN QUEEN 21

S A V FINAL ANSWER 0035
PRIDES PITA OF CONANGA 8821
B C MATRIX 4132
PVF ALL PROVEN QUEEN 503

BAR-E-L IRONCLAD 177Y

DAKITCH MDK XENA 98B

MS DAKITCH MDK XENA 152Y

HF IRON MAN 167W
BAR-E-L DUCHESS 86T
T B DOMINATOR 818
MS DA KITCH M D K XENA 63U

CED	BW	WW	YW	MILK	CEM	REA	MRB
9	1	72	120	26	11	0.47	0.11
IMF	RIBEYE AREA		RIB FAT		RUMP FAT		
ACT	ADJ	ACT	ADJ	ACT	ADJ	ACT	ADJ
4.49	4.44	15.7	15.7	0.23	0.23	0.3	0.3

ACT BW

76

ACT WW

968

ADJ WW

919

2/5/17 WT

1315

Suitable for heifers. Mothers Ratios: BW 1 at 102 WW 1 at 120.



Lot 19

Lot 19

DAKITCH 88B SUB ZERO 24D

Registration #: 18548172 • Birthdate: 02/03/16

EATHINGTON SUB-ZERO

CONNEALY CAPITALIST 028

KP MISS PROVEN QUEEN 21

S A V FINAL ANSWER 0035
PRIDES PITA OF CONANGA 8821
B C MATRIX 4132
PVF ALL PROVEN QUEEN 503

S A V RECORD HARVEST 2186

MS DAKITCH BARBIE 88B

MS DA KITCH 8R BARBIE 93W

S A V HARVESTOR 0338
S A V BLACKBIRD 9289
S A V NET WORTH 4200
MS DA KITCH 864 BARBIE 8R

CED	BW	WW	YW	MILK	CEM	REA	MRB
6	1.9	60	106	30	10	0.5	0.36
IMF	RIBEYE AREA		RIB FAT		RUMP FAT		
ACT	ADJ	ACT	ADJ	ACT	ADJ	ACT	ADJ
4.44	4.43	14.5	14.6	0.2	0.21	0.12	0.13

ACT BW

82

ACT WW

874

ADJ WW

855

2/5/17 WT

1200

Suitable for heifers. Mothers Ratios: BW 1 at 110 WW 1 at 112.

Angus Bulls



Lot 20
DAKITCH MDK73X UNANIMOUS 97D
 Registration #: 18551387 • Birthdate: 03/04/16

VISION UNANIMOUS 1418
 VISION EDELLA 665

PVF ALL PAYDAY 729
MS DA KITCH 906 BLACKCAP 73X
 D H BLACKCAP 906

GAMBLES ROYAL FLUSH
 LAGRAN PRIDE 7140
 BOYD ON TARGET 1083
 VISION EDELLA 337

S A V PAYROLL 5281
 P V F BLACKBIRD 201
 CHAMPION HILL B52 TRAVELER
 D H BLACKCAP 459

CED	BW	WW	YW	MILK	CEM	REA	MRB	ACT BW
-3	4.2	62	102	25	0	0.5	0.38	90
								ACT WW
								842
								ADJ WW
								826
								2/5/17 WT
								1245

IMF RIB EYE AREA RIB FAT RUMP FAT
 ACT ADJ ACT ADJ ACT ADJ ACT ADJ

3.28 3.38 14.2 14.8 0.2 0.23 0.21 0.24

Mothers Ratios: BW 4 at 115 WW 4 at 114 YW 3 at 105.

Lot 21
DAKITCH 10X UNANIMOUS 90D
 Registration #: 18551388 • Birthdate: 03/01/16

VISION UNANIMOUS 1418
 VISION EDELLA 665

S A V NET WORTH 4200
MS DA KITCH 18S ENVY 10X
 MS DA KITCH ENVY 18S

GAMBLES ROYAL FLUSH
 LAGRAN PRIDE 7140
 BOYD ON TARGET 1083
 VISION EDELLA 337

S A V 8180 TRAVELER 004
 S A V MAY 2410
 TC FREEDOM 104
 C A R MISS ENVY 86

CED	BW	WW	YW	MILK	CEM	REA	MRB	ACT BW
5	2.3	64	110	20	7	0.25	0.68	85
								ACT WW
								836
								ADJ WW
								812
								2/5/17 WT
								1190

IMF RIB EYE AREA RIB FAT RUMP FAT
 ACT ADJ ACT ADJ ACT ADJ ACT ADJ

4.39 4.48 12.9 13.3 0.22 0.24 0.2 0.22

Mothers Ratios: BW 5 at 99 WW 5 at 98 YW 2 at 104.

Lot 22
DAKITCH MDK 79Z PIONEER 116D
 Registration #: 18692848 • Birthdate: 03/09/16

DAKITCH 23P PIONEER 81Z
 MS DA KITCH BARBIE 23P

S A V PIONEER 7301

S A V FINAL ANSWER 0035
 S A V BLACKBIRD 5297
 BON VIEW NEW DESIGN 878
 MS DAKITCH BARBIE 53M

S A V IRON MAN 8195
 ANGUS GLEN FAVORITE 9N
 S A F FAME
 K M D EXT 201G

CED	BW	WW	YW	MILK	CEM	REA	MRB	ACT BW
8	-0.3	36	61	25	12	0.39	0.29	77
								ACT WW
								718
								ADJ WW
								731
								2/5/17 WT
								1075

IMF RIB EYE AREA RIB FAT RUMP FAT
 ACT ADJ ACT ADJ ACT ADJ ACT ADJ

3.49 3.61 13.3 13.9 0.31 0.34 0.28 0.31

Suitable for heifers. Mothers Ratios: BW 2 at 103 WW 2 at 95.

Lot 23
DAKITCH 130Z 81ZPIONEER 146D
 Registration #: 18517530 • Birthdate: 03/18/16

DAKITCH 23P PIONEER 81Z
 MS DA KITCH BARBIE 23P

S A V PIONEER 7301

S A V FINAL ANSWER 0035
 S A V BLACKBIRD 5297
 BON VIEW NEW DESIGN 878
 MS DAKITCH BARBIE 53M

T B DOMINATOR 818
MS DAKITCH 2T ANN ELBAR 130Z
 MS DA KITCH ANN ELBAR 2T

TC FREEDOM 526
 TC PEG 4077
 TC FREEDOM 104
 H H ANN ELBAR 36

CED	BW	WW	YW	MILK	CEM	REA	MRB	ACT BW
9	-0.5	46	86	28	11	0.32	0.15	78
								ACT WW
								800
								ADJ WW
								840
								2/5/17 WT
								1225

IMF RIB EYE AREA RIB FAT RUMP FAT
 ACT ADJ ACT ADJ ACT ADJ ACT ADJ

2.91 3.07 13.9 14.8 0.27 0.31 0.34 0.38

Suitable for heifers. Mothers Ratios: BW 2 at 95 WW 2 at 106 YW 1 at 101.

Lot 24
DAKITCH 56B RIGHTANSWER 101D
 Registration #: 18692845 • Birthdate: 03/05/16

THUNDER CREEK RIGHT ANSWER9A
 THUNDER CREEK COUNTESS 21Y

CONNEALY RIGHT ANSWER 746

S A V FINAL ANSWER 0035
 HAPPY DELL OF CONANGA 262
 S A V BISMARCK 5682
 THUNDER CREEK COUNTESS 21W

WK SMOOTH 2382
MS DAKITCH 59U MEG 56B
 MS DA KITCH MEG 59U

SYDGEN DOC 9017
 THOENE IN FOCUS 763
 TC FREEDOM 104
 MS DA KITCH MEG 97L

CED	BW	WW	YW	MILK	CEM	REA	MRB	ACT BW
4	2.6	54	98	24	8	0.2	0.32	82
								ACT WW
								730
								ADJ WW
								786
								2/5/17 WT
								1024

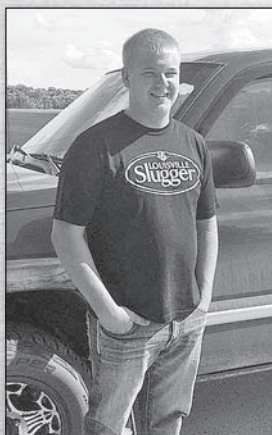
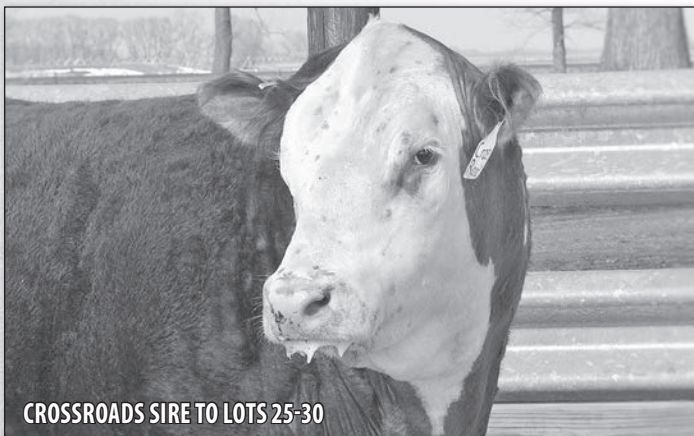
IMF RIB EYE AREA RIB FAT RUMP FAT
 ACT ADJ ACT ADJ ACT ADJ ACT ADJ

4.02 4.13 12.8 13.4 0.18 0.21 0.21 0.24

Suitable for heifers. Mothers Ratios: BW 1 at 110 WW 1 at 103.

Thank you for attending our sale!

Hereford Bulls



MASON
KITCHELL
SENIOR
AT NDSCS
STUDYING
WELDING,
THANKYOU
MASON FOR
ALL YOUR
HARD
WORK!

Lot 25
DAKITCH MDK 99A DISCHARGE 19D
Registration #: P43710602 • Birthdate: 01/31/16

NJW 73S M326 TRUST 100W ET
TH 90W 755T MS DOM 28Z

KCF BENNETT 3008 M326
NJW P606 72N DAYDREAM 73S
TH 223 711 VICTOR 755T
TH 618 45P MS DOM 90W

HARVIE TOP CUT 57X
MS DAKITCH MDK FELINA 99A
MS MAKITCH FELINA 61R

HARVIE DAN T-BONE 196T
OVHF PRECIOUS EMMA 17N
HA LANSING L1135
FELINA 903

CED	BW	WW	YW	MILK	M&G	REA	MRB
-0.5	5.5	66	101	27	60	0.75	0.07

IMF	ADJ	ACT	ADJ	ACT	ADJ
2.21	2.20	12.7	12.61	0.20	0.20

ACT BW
90
ACT WW
812
ADJ WW
741
2/5/17 WT
1125

Mothers Ratios: BW 2 at 100 WW 2 at 98.5 YW 2 at 92.5.

Lot 26
DAKITCH MDK 136A CROSSROAD 47D
Registration #: P43710606 • Birthdate: 02/13/16

NJW 73S M326 TRUST 100W ET
TH 90W 755T MS DOM 28Z

KCF BENNETT 3008 M326
NJW P606 72N DAYDREAM 73S
TH 223 711 VICTOR 755T
TH 618 45P MS DOM 90W

HARVIE TOP CUT 57X
MS DAKITCH MDK TBELL 136A
MOHICAN TBELL 418T ET

HARVIE DAN T-BONE 196T
OVHF PRECIOUS EMMA 17N
REMITALL PATRIOT ET 13P
HAROLDSON'S SARAH 05J 64M

CED	BW	WW	YW	MILK	M&G	REA	MRB
-2.1	4.5	58	99	31	60	0.60	0.11

IMF	ADJ	ACT	ADJ	ACT	ADJ
2.36	2.37	11.3	11.41	0.22	0.22

ACT BW
81
ACT WW
704
ADJ WW
667
2/5/17 WT
1065

Mothers Ratios: BW 2 at 106.5 WW 2 at 109 YW 1 at 97.

Lot 27
DAKITCH MDK138A CROSSROAD 111D
Registration #: 43710607 • Birthdate: 03/08/16

NJW 73S M326 TRUST 100W ET
TH 90W 755T MS DOM 28Z

KCF BENNETT 3008 M326
NJW P606 72N DAYDREAM 73S
TH 223 711 VICTOR 755T
TH 618 45P MS DOM 90W

HARVIE TOP CUT 57X
MS DAKITCH MDK DIARY 138A
MS MAKITCH DIARY 19G 49S

HARVIE DAN T-BONE 196T
OVHF PRECIOUS EMMA 17N
FHF 8403 STARBUCK 19H
RCH MISS ADVANCE 112S

CED	BW	WW	YW	MILK	M&G	REA	MRB
-0.9	4.7	63	103	29	61	0.66	0.22

IMF	ADJ	ACT	ADJ	ACT	ADJ
3.43	3.48	11.7	12.17	0.28	0.30

ACT BW
84
ACT WW
710
ADJ WW
719
2/5/17 WT
1028

Mothers Ratios: BW 3 at 103.7 WW 3 at 105.7 YW 1 at 100.

Lot 28
DAKITCH MJK A051 CROSSROAD 48D
Registration #: P43710678 • Birthdate: 02/13/16

NJW 73S M326 TRUST 100W ET
TH 90W 755T MS DOM 28Z

KCF BENNETT 3008 M326
NJW P606 72N DAYDREAM 73S
TH 223 711 VICTOR 755T
TH 618 45P MS DOM 90W

E BRAXTON 719
E 337U DIVA Y869

ANCHOR BRAXTON
ANCHOR 17R
HARVIE SAFNBFI COLATERAL 337U
E M211 LADY RANGER U869

CED	BW	WW	YW	MILK	M&G	REA	MRB
0.4	2.9	59	88	29	58	0.77	0.21

IMF	ADJ	ACT	ADJ	ACT	ADJ
3.09	3.10	12.9	13.01	0.16	0.16

ACT BW
77
ACT WW
667
ADJ WW
630
2/5/17 WT
1002

Suitable for heifers. Mothers Ratios: BW 2 at 102.5 WW 2 at 102.5 YW 1 at 100.

Hereford Bulls



Lot
29

DAKITCH MEK 738A CROSSROAD 66D

Registration #: 43710682 • Birthdate: 02/21/16

NJW 73S M326 TRUST 100W ET
TH 90W 755T MS DOM 28Z
KCF BENNETT 3008 M326
NJW P606 72N DAYDREAM 73S
TH 223 71I VICTOR 755T
TH 618 45P MS DOM 90W
TH 71U 719T MR HEREFORD 11X
RANGELINE 62U MS HEREFORD 738A
RANGELINE 48R HOLLY 62U
TH 122 71I VICTOR 719T
TH 7N 45P RITA 71U
RANGELINE 157H PROWLER 16S
RANGELINE 28K BELLE 48R

CED	BW	WW	YW	MILK	M&G	REA	MRB	ACT BW
-0.8	4.3	65	104	31	64	0.69	0.14	90
IMF								ACT WW
ACT	ADJ	ACT	ADJ	ACT	ADJ	ACT	ADJ	728
3.09	3.12	11.5	11.73	0.23	0.24			ADJ WW
								702
								2/5/17 WT
								1065

Mothers Ratios: BW 2 at 104.5 WW 2 at 104.5 YW 2 at 97.5.

Lot
30

DAKITCH 166A CROSSROAD 116D

Registration #: P43770281 • Birthdate: 03/10/16

NJW 73S M326 TRUST 100W ET
TH 90W 755T MS DOM 28Z
KCF BENNETT 3008 M326
NJW P606 72N DAYDREAM 73S
TH 223 71I VICTOR 755T
TH 618 45P MS DOM 90W

HARVIE TOP CUT 57X
MS DAKITCH 110R FANCY 166A
MS DAKITCH FANCY 110R

CED	BW	WW	YW	MILK	M&G	REA	MRB	ACT BW
-0.8	4.9	57	96	28	57	0.63	0.12	82
IMF								ACT WW
ACT	ADJ	ACT	ADJ	ACT	ADJ	ACT	ADJ	690
3.79		10.6		0.23				ADJ WW
								700
								2/5/17 WT
								1000

Lot
31

DAKITCH MEK 110Y DODGER 81D

Registration #: 43710594 • Birthdate: 02/27/16

HAROLDSONS TRUMP 16R ET 32X
TH 605F 45P PRIMROSE 400U ET
HARVIE RAFTSMAN 16R
HAROLDSON'S 37H MIRA ET 62K
NJW FHF 9710 TANK 45P
YY 125Y PRIMROSE 605F

CED	BW	WW	YW	MILK	M&G	REA	MRB	ACT BW
-0.2	4.0	70	114	26	61	0.68	0.02	90
IMF								ACT WW
ACT	ADJ	ACT	ADJ	ACT	ADJ	ACT	ADJ	820
2.31	2.35	12.9	13.22	0.23	0.24			ADJ WW
								770
								2/5/17 WT
								1140

Mothers Ratios: BW 4 at 104 WW 4 at 107.8 YW 2 at 102.5.

Lot
32

DAKITCH MDK 54A TRUMP 83D

Registration #: P43710595 • Birthdate: 02/28/16

HAROLDSONS TRUMP 16R ET 32X
TH 605F 45P PRIMROSE 400U ET
HARVIE RAFTSMAN 16R
HAROLDSON'S 37H MIRA ET 62K
NJW FHF 9710 TANK 45P
YY 125Y PRIMROSE 605F

CED	BW	WW	YW	MILK	M&G	REA	MRB	ACT BW
0.7	2.3	62	110	31	62	0.82	0.09	78
IMF								ACT WW
ACT	ADJ	ACT	ADJ	ACT	ADJ	ACT	ADJ	726
1.91	1.95	13.0	13.33	0.33	0.34			ADJ WW
								714
								2/5/17 WT
								1130

Suitable for heifers. Mothers Ratios: BW 2 at 101.5 WW 2 at 113.5 YW 2 at 109.5.

Lot
33

DAKITCH MDK W12 DIVIDEND 168D

Registration #: P43710601 • Birthdate: 03/27/16

HAROLDSONS TRUMP 16R ET 32X
TH 605F 45P PRIMROSE 400U ET
HARVIE RAFTSMAN 16R
HAROLDSON'S 37H MIRA ET 62K
NJW FHF 9710 TANK 45P
YY 125Y PRIMROSE 605F

CED	BW	WW	YW	MILK	M&G	REA	MRB	ACT BW
-1.5	3.6	66	98	24	56	0.57	0.04	85
IMF								ACT WW
ACT	ADJ	ACT	ADJ	ACT	ADJ	ACT	ADJ	746
2.88	2.97	10.7	11.46	0.23	0.26			ADJ WW
								752
								2/5/17 WT
								1008

Maternal sisters working in herds for Crum Cattle Company, IL and 4J Cattle Company, ND. Mothers Ratios: BW 6 at 102.7 WW 5 at 107 YW 3 at 102.7.



Hereford Bulls



Lot 34
DAKITCH MDK 95S TRUMP 55D ET
 Registration #: P43719080 • Birthdate: 02/16/16

HAROLDSONS TRUMP 16R ET 32X
 TH 400U 32X TRUMP 206Z
 TH 605F 45P PRIMROSE 400U ET

HARVIE RAFTSMAN 16R
 HAROLDSON'S 37H MIRA ET 62K
 NJW FHF 9710 TANK 45P
 YY 125Y PRIMROSE 605F

DAKITCH TANK MASTER 57P
MS DAKITCH LADY MASTER 95S
 MS DAKITCH DOMINO 41N

FHF 8403 STARBUCK 19H
 MS DAKITCH TRISH 93L
 FHF CL DOMINO 614R 77U
 MS DAKITCH EXILE 61D

CED	BW	WW	YW	MILK	M&G	REA	MRB
-1.8	3.8	55	84	29	56	0.48	-0.07

IMF	ADJ	ACT	ADJ	ACT	ADJ
1.63	1.65	12.2	12.35	0.25	0.26

ACT BW
68
ACT WW
738
ADJ WW
671
2/5/17 WT
1010

Suitable for heifers, Full brother to lot 35, Maternal Brother to lots 38, 39, 40.



Lot 35
DAKITCH MDK 95S TRUMP 31D ET
 Registration #: P43719079 • Birthdate: 02/04/16

HAROLDSONS TRUMP 16R ET 32X
 TH 400U 32X TRUMP 206Z
 TH 605F 45P PRIMROSE 400U ET

HARVIE RAFTSMAN 16R
 HAROLDSON'S 37H MIRA ET 62K
 NJW FHF 9710 TANK 45P
 YY 125Y PRIMROSE 605F

DAKITCH TANK MASTER 57P
MS DAKITCH LADY MASTER 95S
 MS DAKITCH DOMINO 41N

FHF 8403 STARBUCK 19H
 MS DAKITCH TRISH 93L
 FHF CL DOMINO 614R 77U
 MS DAKITCH EXILE 61D

CED	BW	WW	YW	MILK	M&G	REA	MRB
-0.8	3.3	54	85	29	56	0.56	-0.04

IMF	ADJ	ACT	ADJ	ACT	ADJ
2.57	2.57	12.4	12.37	0.16	0.16

ACT BW
80
ACT WW
726
ADJ WW
639
2/5/17 WT
1080

Full brother to lot 34, Maternal Brother to lots 38, 39, 40.



Lot 36
DAKITCH MDK CHANGEMAKER 84D ET
 Registration #: P43716731 • Birthdate: 03/01/16

NJW 73S M326 TRUST 100W ET
NJW 78P TWENTYTWELVE 190Z ET
 NJW BW LADYSPORT DEW 78P ET

KCF BENNETT 3008 M326
 NJW P606 72N DAYDREAM 73S
 RU 20X BOULDER 57G
 SADDLE VLY LADYSPORT 120

NJW FHF 9710 TANK 45P
TH 7N 45P RITA 71U
 TH 814H 3L RITA 7N

FHF 8403 STARBUCK 19H
 GV 579 VICTORIA 9710
 S&S ROCK SOLID 3L
 TALECO 832W RITA 14H

CED	BW	WW	YW	MILK	M&G	REA	MRB
-3.5	4.6	51	88	29	55	1.00	0.09

IMF	ADJ	ACT	ADJ	ACT	ADJ
2.98	3.02	14.2	14.57	0.20	0.21

ACT BW
77
ACT WW
805
ADJ WW
762
2/5/17 WT
1205

Here is a bull that is packed full of powerful genetics on the top and bottom of his pedigree. He is a direct son of the Rita 71U cow that has made a huge impact on the Topp program and has raised many big name bulls for him, such as Mr. Hereford 11X. The mating to Twentytwelve was pretty much guaranteed to work with all the great things he is doing across the country. Changemaker is super stout, packed full of muscle, and marked up just how you want one! Take advantage of this rare opportunity to purchase a herd sire with genetics like this! Full brother to lot 37.



Hereford Bulls



71U MOTHER TO LOTS 36 AND 37



Lot 38



955 MOTHER TO LOTS 34, 35, 38, 39, 40

Lot 37

DAKITCH MDK UNBROKEN 105D ET

Registration #: P43716740 • Birthdate: 03/06/16

NJW 73S M326 TRUST 100W ET
NJW 78P TWENTYTWELVE 190Z ET
NJW BW LADYSPORT DEW 78P ET

KCF BENNETT 3008 M326
NJW P606 72N DAYDREAM 73S
RU 20X BOULDER 57G
SADDLEVLV LADYSPORT 120

TH 7N 45P RITA 71U

NJW FHF 9710 TANK 45P
TH 814H 3L RITA 7N

FHF 8403 STARBUCK 19H
GV 579 VICTORIA 9710
S&S ROCK SOLID 3L
TALECO 832W RITA 14H

CED	BW	WW	YW	MILK	M&G	REA	MRB
-3.5	4.6	51	88	29	55	0.78	0.03
IMF		RIBEYE AREA		RIB FAT			
ACT	ADJ	ACT	ADJ	ACT	ADJ		
2.18	2.23	11.2	11.64	0.21	0.23		

ACT BW
89
ACT WW
800
ADJ WW
769
2/5/17 WT
1070

Full brother to lot 36.

Lot 38

DAKITCH MDK BELIEVABLE 28D ET

Registration #: P43738624 • Birthdate: 02/03/16

ASM 980 BELIEVE 204Z

CRR HELTON 980
ASM 122L MISS 801ET

GO L18 EXCEL T31
CRR 9B JULIANNE 405
REMITALL ONLINE 122L
KSU MISS 6052F 308 ET

MS DAKITCH LADY MASTER 955
MS DAKITCH DOMINO 41N

FHF 8403 STARBUCK 19H
MS DAKITCH TRISH 93L
FHF CL DOMINO 614R 77U
MS DAKITCH EXILE 61D

CED	BW	WW	YW	MILK	M&G	REA	MRB
-1.7	4.4	52	81	28	53	0.38	-0.01
IMF		RIBEYE AREA		RIB FAT			
ACT	ADJ	ACT	ADJ	ACT	ADJ		
2.52	2.51	12.7	12.65	0.11	0.11		

ACT BW
88
ACT WW
828
ADJ WW
726
2/5/17 WT
1160

Full brother to lot 39, Maternal Brother to lots 34, 35, 40.

Lot 39

DAKITCH MDK BELIEVE ME 37D ET

Registration #: P43738623 • Birthdate: 02/10/16

ASM 980 BELIEVE 204Z

CRR HELTON 980
ASM 122L MISS 801ET

GO L18 EXCEL T31
CRR 9B JULIANNE 405
REMITALL ONLINE 122L
KSU MISS 6052F 308 ET

MS DAKITCH LADY MASTER 955
MS DAKITCH DOMINO 41N

FHF 8403 STARBUCK 19H
MS DAKITCH TRISH 93L
FHF CL DOMINO 614R 77U
MS DAKITCH EXILE 61D

CED	BW	WW	YW	MILK	M&G	REA	MRB
-1.7	4.4	52	81	28	53	0.24	0.05
IMF		RIBEYE AREA		RIB FAT			
ACT	ADJ	ACT	ADJ	ACT	ADJ		
2.63	2.64	12.0	12.06	0.29	0.29		

ACT BW
85
ACT WW
812
ADJ WW
726
2/5/17 WT
1105

Full brother to lot 38, Maternal Brother to lots 34, 35, 40.

Lot 40

DAKITCH MDK 63N TUNDRA 74D ET

Registration #: P43717250 • Birthdate: 02/25/16

TH JWR SOP 16G 57G TUNDRA 63N
TEE-JAY 707B GEMINI 16G ET

REMITALL KEYNOTE 20X
RU 10A DEW 57D
KLONDIKE 28U 707B
KILMRLE 452M GEMINI R261

MS DAKITCH LADY MASTER 955
MS DAKITCH DOMINO 41N

FHF 8403 STARBUCK 19H
MS DAKITCH TRISH 93L
FHF CL DOMINO 614R 77U
MS DAKITCH EXILE 61D

CED	BW	WW	YW	MILK	M&G	REA	MRB
-1.8	4.3	51	83	23	49	0.22	0.02
IMF		RIBEYE AREA		RIB FAT			
ACT	ADJ	ACT	ADJ	ACT	ADJ		
2.09	2.12	12.1	12.37	0.20	0.21		

ACT BW
89
ACT WW
646
ADJ WW
603
2/5/17 WT
1125

Maternal Brother to lots 34, 35, 38, 39.

2-year-old Hereford Bulls

Lot
41

DAKITCH MDK CHARLIE BROWN 8C

Registration #: P43603517 • Birthdate: 02/02/15

TH 400U 32X TRUMP 206Z
TH 605F 45P PRIMROSE 400U ET

HARVIE RAFTSMAN 16R
HAROLDSON'S 37H MIRA ET 62K
NJW FHF 9710 TANK 45P
YY 125Y PRIMROSE 605F

TDP VINTAGE 402U ET
MS DAKITCH MDK COWGIRL 13Z
GRANDVIEW CMR COWGIRL 7475 ET

SHF RIB EYE M326 R117
ASH LIL PEANUT 203P
NJW 57G 712B COWTOWN 60M
HA LASS 6210F

CED	BW	WW	YW	MILK	M&G	REA	MRB	ACT BW
-1.5	4.6	64	87	24	56	0.62	0.02	87
IMF								ACT WW
RIBEYE AREA								830
RIB FAT								ADJ WW
ACT	ADJ	ACT	ADJ	ACT	ADJ	ACT	ADJ	806
1.95	1.94	13.1	13.04	0.28	0.28			ACT YW
								1165

Mothers Ratios: BW 2 at 99.5 WW 2 at 103.5 YW 2 at 93.

Lot
42

DAKITCH MDK CARBON COPY 172C

Registration #: P43603493 • Birthdate: 03/22/15

TH 400U 32X TRUMP 206Z
TH 605F 45P PRIMROSE 400U ET

HARVIE RAFTSMAN 16R
HAROLDSON'S 37H MIRA ET 62K
NJW FHF 9710 TANK 45P
YY 125Y PRIMROSE 605F

HARVIE DAN T-BONE 196T
MS DAKITCH MDK CHARITY 125Y
MS DAKITCH CHARITY LADY 72U

KAIRURU ABERDEEN 03 0047
HARVIE MS FIREFLY 65P
TH 14M 63N TUNDRA 15
MS DAKITCH 52A 33H

CED	BW	WW	YW	MILK	M&G	REA	MRB	ACT BW
-0.5	4.6	73	124	27	63	0.78	0.00	90
IMF								ACT WW
RIBEYE AREA								782
RIB FAT								ADJ WW
ACT	ADJ	ACT	ADJ	ACT	ADJ	ACT	ADJ	858
1.65	1.73	14.9	15.57	0.44	0.46			ACT YW
								1230

Mothers Ratios: BW 4 at 95.3 WW 3 at 102.7 YW 1 at 111.

Lot
43

DAKITCH 142X TOP CUT 17C

Registration #: P43603504 • Birthdate: 02/06/15

HARVIE TOP CUT 57X

HARVIE DAN T-BONE 196T
OVHF PRECIOUS EMMA 17N

KAIRURU ABERDEEN 03 0047
HARVIE MS FIREFLY 65P
OVHF 20X MASTER KEY 5H
CASSBURN PRECIOUS A-SOME 1E

TH 805H 20N SPARTAN 12ST
MS DAKITCH 33H CHARITY 142X
MS DAKITCH 52A 33H

NPH 20X SPARTAN 20N
YY 707B PRIMROSE 805H
DAKITCH 77U DOMINO 52A
MS DAKITCH NICK 35A

CED	BW	WW	YW	MILK	M&G	REA	MRB	ACT BW
-0.6	3.8	45	73	25	48	0.26	-0.03	89
IMF								ACT WW
RIBEYE AREA								862
RIB FAT								ADJ WW
ACT	ADJ	ACT	ADJ	ACT	ADJ	ACT	ADJ	811
2.30	2.30	12.5	12.5	0.39	0.39			ACT YW
								1290

Mothers Ratios: BW 5 at 98.5 WW 4 at 109.8 YW 2 at 105.5.

Lot
44

DAKITCH 99Y MILSAP 61C

Registration #: U43627637 • Birthdate: 02/18/15

PURPLE MILSAP 45S

BR MOLER ET
JH MISS SUSIE 06L

REMITALL ONLINE 122L
DM L1 DOMINETTE 820
NJW 1Y WRANGLER 19D
RH MS BT 445M 860C

TH 14M 63N TUNDRA 15
MS DAKITCH 13U POLLY 99Y
MS DAKITCH POLLY 73P 13U

TH JWR SOP 16G 57G TUNDRA 63N
DAN FREIDA 20J 14M
FHF 8403 STARBUCK 19H
MS DAKITCH LANSING 73P

CED	BW	WW	YW	MILK	M&G	REA	MRB	ACT BW
3.8	4.8	59	85	26	55	0.62	-0.11	95
IMF								ACT WW
RIBEYE AREA								690
RIB FAT								ADJ WW
ACT	ADJ	ACT	ADJ	ACT	ADJ	ACT	ADJ	684
1.70	1.72	13.4	13.58	0.28	0.29			ACT YW
								1150

Mothers Ratios: BW 4 at 102.8 WW 4 at 104.3 YW at 195.

Lot
45

DAKICH 92U CODE BLUE 55C

Registration #: P43603485 • Birthdate: 02/17/15

KJ 471T BORDER 679Z ET

TH SHR 605 57G BISMARCK 243R ET
KJ HVH 33N RADISSON 471T ET

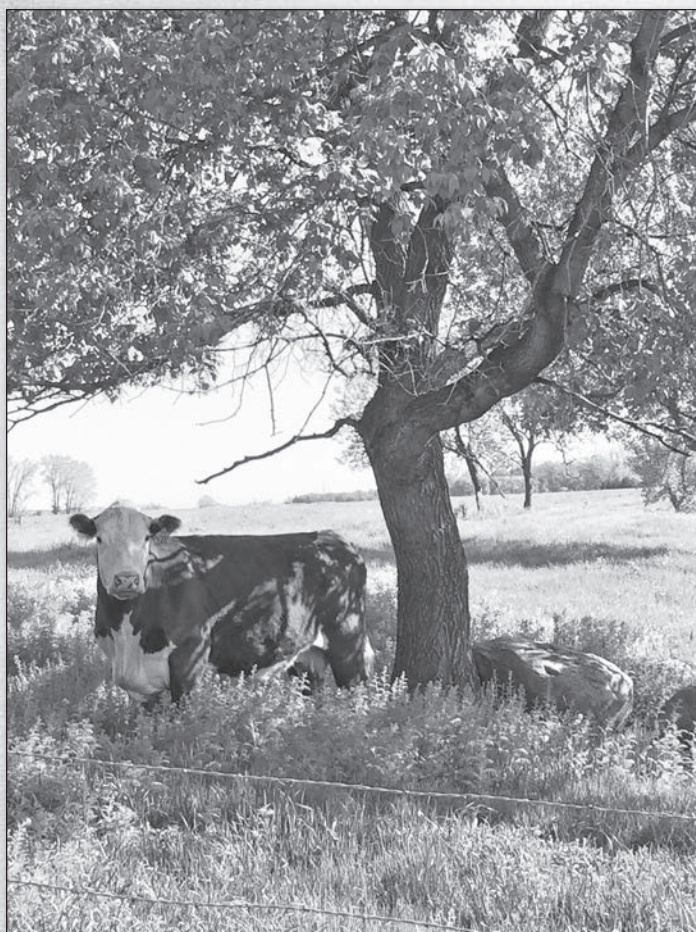
RU 20X BOULDER 57G
YY 125Y PRIMROSE 605F
SHF RADAR M326 R125
HVH OKSANA 4L 33N

TH 14M 63N TUNDRA 15
MS DAKITCH MACK LIZ 15 92U
MS DAKITCH EMMETT 49N

TH JWR SOP 16G 57G TUNDRA 63N
DAN FREIDA 20J 14M
BAR-E-L 740C EMMETT 50F
HPH DIGGER 46G 72J

CED	BW	WW	YW	MILK	M&G	REA	MRB	ACT BW
-2.0	6.4	54	96	16	44	0.46	-0.11	94
IMF								ACT WW
RIBEYE AREA								760
RIB FAT								ADJ WW
ACT	ADJ	ACT	ADJ	ACT	ADJ	ACT	ADJ	725
1.97	1.99	12.4	12.57	0.19	0.2			ACT YW
								1250

Full Sister working at Sip Stock Farm - Ada, MN, Mothers Ratios: BW 7 at 100 WW 7 at 91.9 YW 4 at 94.3.



Thank you for
attending our sale!

MAKE YOUR HERD GREAT AGAIN!

TH 400U 32X TRUMP 206Z {DLF,HYF,IEF}



CE	BW	WW	YW	MM	M&G	MCE	MCW	UDDR	TEAT	SC	CW	FAT	REA	MARB	BMI\$	CEZ\$	BI\$	CHB\$
-2.0	3.2	68	104	25	59	0.0	108	1.24	1.26	0.6	77	0.018	0.73	0.10	14	10	10	32
.33	.66	.54	.54	.19		.28	.39	P	P	.33	.38	.30	.32	.27				

P43269879 — Calved: March 29, 2012 — Tattoo: BE 206Z

HARVIE RAFTSMAN 16R {DLF,HYF,IEF}
 HAROLDSONS TRUMP 16R ET 32X {DLF,HYF,IEF}
 P43268222 HAROLDSON'S 37H MIRA ET 62K

HARVIE LADIES MAN 4L {SOD}
 HARVIE MISS FIREFLY 51F
 REMITALL HOLLYWOOD 37H {CHB}
 HAROLDSONS CU DESTINY 2Z 19G

NJW FHF 9710 TANK 45P {SOD}{CHB}{DLF,HYF,IEF}
 TH 605F 45P PRIMROSE 400U ET {DLF,HYF,IEF}
 P42885001 YY 125Y PRIMROSE 605F

FHF 8403 STARBUCK 19H {SOD}
 GV 579 VICTORIA 9710 {DLF,HYF,IEF}
 DAVIS 81W TOP CAT ET 125Y
 CFCW MS ENERGZR LECTRC 5B

- Second to none phenotype
- Beautiful udders and milk flow
- Powerful carcass data
- Style and high performance

Semen: Spring Special: \$30/straw, \$25/straw for 20 straws or more; Non-certificate sire

For semen contact: Streamline Genetics, 765-490-6286; Cattle Vision 866-356-4565 or Matthew Kitchell 701-799-7690

Progeny



Bull Sale • March 25, 2017

Dakitch
 Hereford Farms

Matthew, Darci and Dawson Kitchell
 David, Lorie Kitchell Family
 1997 355th St. • Ada, MN 56510
 701-799-7690

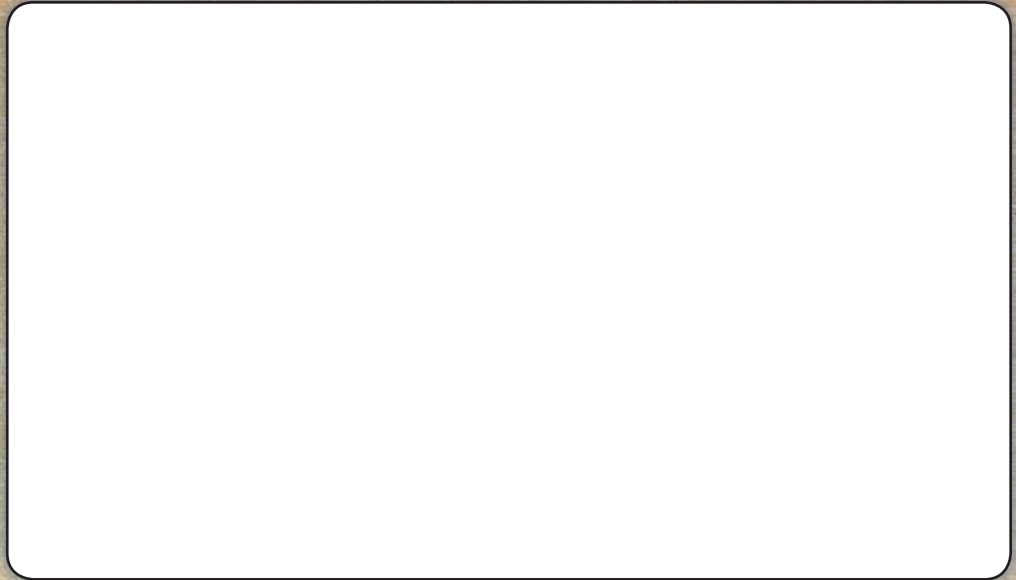
matthewdkitchell@gmail.com • www.dakitchfarms.com

2016 in review at Dakitch



Dakitch Angus & Hereford Farms
3471 St Hwy 200
Ada, MN 56510

D
K



Hope to see you March 25th!

