

DaKitch Farms

"Our Brand your Success"



*10th
Anniversary
sale*

**D
K**

2024 marks 65 Years of raising registered seedstock

1:00 pm Saturday, March 23, 2024 At the Farm Ada, MN

Welcome

Dear Friends,

Welcome to our 10th Annual DaKitch Farms “Our Brand is your Success” Production sale. 2024 marks 65 years in the registered seedstock business at DaKitch Farms. Over the years our focus has always stayed the same, to produce quality genetics that will positively influence the bottom line for the commercial cattleman. It is hard to believe that it was been 10 years since we transitioned from private treaty sales, to having an annual production sale. We would like to thank all of our customers for your continued support throughout the years. Our loyal customers have truly pushed us to raise quality stock year after year.

The past couple years we have been moving our calving season up to start in December. We feel this allows us to offer bulls that will be older at time of pasture turn outs. This years bull offering is an incredibly stout, sound made, docile group with exceptional EPD profiles! Whether your operation needs a calving ease, high growth, high maternal or a more terminal carcass sire, you will find a strong selection of exceptional quality herd sires that will fill your needs.

All bulls have had ultrasound measurements taken for rib eye size, marbling and back fat. Data will be available online and at the sale. The bulls will be fertility tested with scrotal measurements taken. The bull offering has been DNA tested and have GE-EPDS. This is like having EPD's from the animal that would include 25 progeny for calving ease, weaning weight and yearling weight, and 22 birth weight measurements, improving the accuracy of the EPD you are selecting for.

Visitors are always welcome to come and view the cattle anytime prior to the sale. We hope to see you at the sale. If you can't make it be sure to register early with DvAuction if you are interested in viewing and bidding with this method.

We look forward to being your seed stock source of good quality Angus, Hereford and NEW this year Sim-Influence cattle.

Sincerely,

Matthew & Darci Kitchell



Matthew, Darci, Dawson & Dutton Kitchell



David & Lorie Kitchell



Mason Kitchell & Abby Korte



Michael & Jamie Kitchell

DaKitch Farms

10th
Annual

"Our Brand is your Success" Bull & Female Sale

Meal served starting at 11 a.m - Sale starts at 1:00 p.m.

Terms & Conditions

Terms of the sale are cash or check. Every animal will be sold to the highest bidder with the auctioneer settling disputes as to bids. All announcements made sale day take precedence over printed material in this catalog. Cattle must be paid in full before they will be released. Registration Certificates will be transferred to the buyer at seller expense.

Retained Interest

DaKitch Farms will be retaining 1/4 semen interest on each bull selling.

Internet Bidding

DvAuction - bidders who wish to utilize the Internet may bid Online at www.dvauction.com



Absentee bids

Bidders wishing to bid who cannot attend the sale, and do not wish to bid Online, please contact any of the sale representatives. We offer a sight unseen guarantee, please contact Matthew for details.

Delivery

Free delivery on purchases of \$4,000 or more to any one location within 300 mile radius. Deliveries will start right after sale. If you are unable to take delivery by the time we deliver to your area a fee will be charged of \$5 per head/day. **Any animal still at DaKitch Farms after May 1st will be charged a fee of \$10 per head/day until the animal is picked up.**

The DaKitch Guarantee:

Every animal in the sale is to the best of our knowledge, free from any disease or defect unless noted otherwise. All bulls are guaranteed breeders. All bulls selling for \$3,000 or more will be guaranteed for one full breeding season. Breeding season is defined as the 90-day period following the first turnout of the bulls.

All claims must be submitted in writing to seller within six months of sale date, along with semen evaluation and health report, at buyer's expenses, from veterinarian. Seller must be contacted as soon as buyer is aware of the problem and before the bull is disposed of. In case an adjustment is required, a replacement bull of equal value is available, he will be provided. If no replacement is available future sale credit will be given, and will be calculated as follows:

$$100\% \text{ purchase price of bull} - \text{salvage value} = \text{sale credit}$$

We assume no liability, legal or otherwise, to make any further compensation to the buyer.

Please notify us as soon as possible should injury occur and prior to the injured bull being sold for salvage. All claims must be made by September 15, 2024.

Injury resulting in death or death of bull will not be the responsibility of Seller. This is an insurable risk that the purchaser can obtain coverage for through Joana Friesz, (701) 400-8744 or (701) 843-8744.

Liability

All persons who attend the sale do so at their own risk. DaKitch Farms and sale staff assume no liability for any accidents, or injuries that may occur.

Please Note

- Supplement sheet with current weight, scrotal and carcass data will be provided by sale day
- Videos of bulls can be viewed on our website www.dakitchfarms.com

Injury or Death prior to Delivery:

All animals become the buyer's risk once they are declared sold. If you are unable to take your animal after the sale we strongly recommend purchasing insurance on your animal(s). Injury resulting in injury or death of the bull prior to delivery will not be the responsibility of DaKitch. Until time of delivery/pickup animals will be cared for at the best of our ability.

Contact Northland Insurance Joana Friesz, 701-400-8744

Scrotal Evaluation

Age in Months	12-14	15-20	21-30	30 plus
Acceptable Range (cm)	30-35	31-37	32-39	33-40

Scrotal Circumference (SC)

A measure of fertility. Testicle size indicated by scrotal circumference measured in centimeters is a highly heritable trait very much correlated to reproductive efficiency. A valuable indicator of bull fertility, puberty and highly related to early puberty in heifers and cow fertility. Increased bull SC should improve fertility and inherent cow herd productivity.

Herd Health

All cattle will be sold in compliance with the health laws of the state of Minnesota. Individual health papers will be furnished for shipment anywhere.

DaKitch Farms has a full vaccination program and all animals are up to date on shots. All bulls have been semen tested. Females are officially calvhooed bangs vaccinated and are considered a breeder at the time of sale.

Bulls have been developed on a rolled corn purina feed pellet mixture, silage and free choice grass hay. All animals are on a purina mineral program, Wind & Rain loose mineral & protein lick tub.

Females have been given the same feed mixture along with free choice grass and and purina mineral.

DaKitch Farms Vaccination Program

At Birth

- Optimizer paste

1 week old

- Nasalegen 3-pmh
- Multimin 90

June 1st

- Vision 8 with Spur
- Bovillis Vista Once SQ
- Bimectin Pour on Dewormer

July

- Long Range
- Vision 8 with Spur

August

- Bovishield Gold 5

September

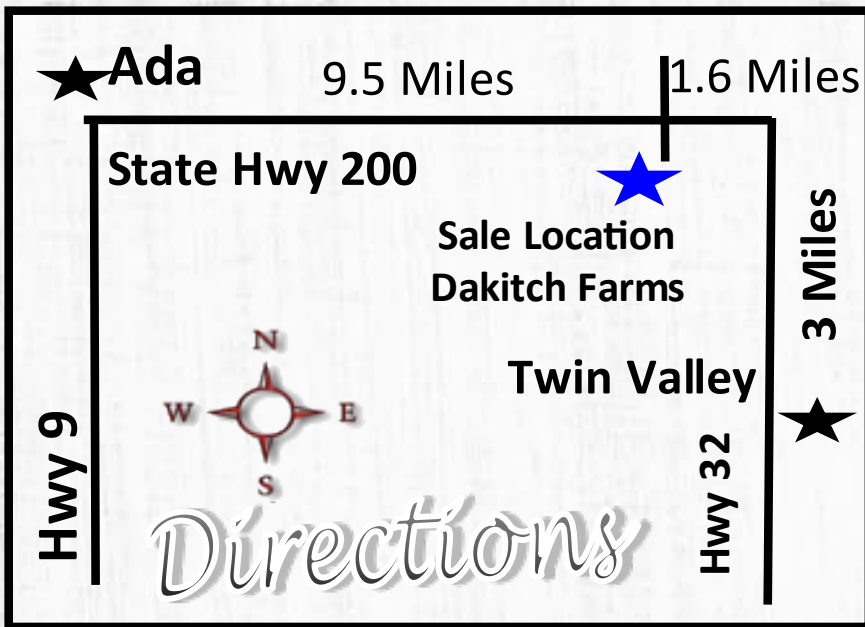
- Bovishield Gold 5 booster
- Bimectin Pour on Dewormer
- Cylence

November

- Valbazen Drench
- Cylence

March

- Bovishield Gold FP5 VL5



Auctioneer:

Dustin Carter.....712-898-9972

Sale day phones:

Matthew Kitchell.....701-799-7690
Darci Kitchell.....701-256-4094
Triston Erickson.....218-415-0046

Sale Representatives:

Will Bollum,507-244-0833
Western Ag Reporter
Kevin Murnin.....406-853-4638
American Hereford Association
Andrew Swanson507-829-4133
Farm & Ranch Guide
Logan Hoffman.....701-388-2618
DvAuction
Steve Wolff.....701-710-1574
The Stockman

Special Guest:

Daryl Rupperecht.....Purina Animal Nutrition
Dr. Jake Galbreath Casselton Vet Clinic

Catalog & Videos By: Darci Kitchell

Accommodations:

Norman Motel, Ada218-784-3781
AmericInn By Wyndham, Hawley ...218-486-5140



**Dustin Carter
Auctioneer**



**Kevin Murnin
American Hereford Association**



**Will Bollum
Western Ag Reporter**



**Andrew Swanson
Farm & Ranch Guide**



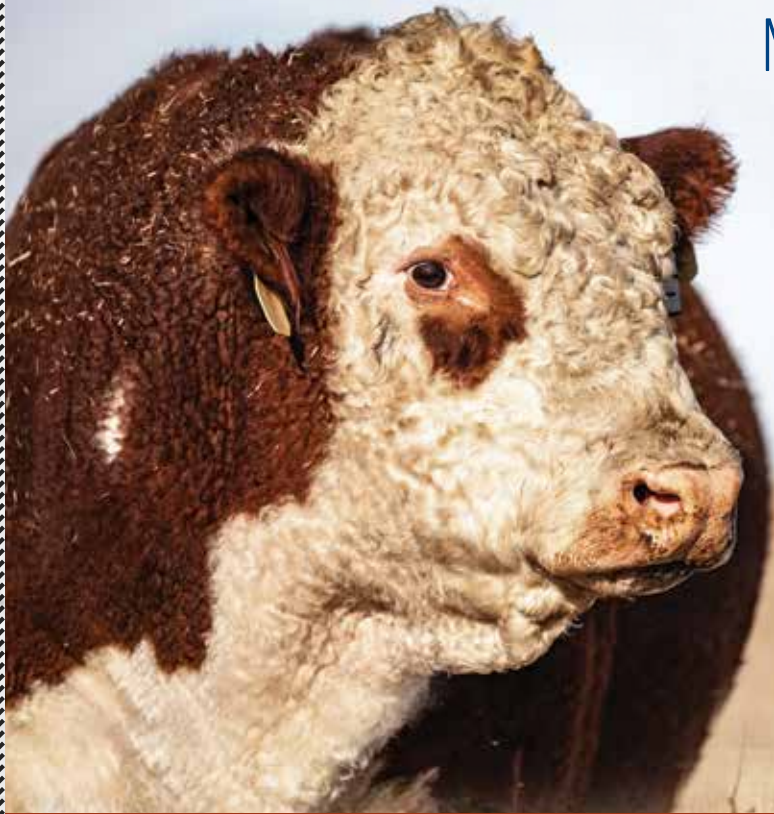
**Logan Hoffman
DvAuction**



Special thank you to both Triston & Ellis
for all your work you put in on the farm!
It doesn't go unnoticed!

KA-CHING.

MORE POUNDS.
MORE CALVES.
MORE PROFIT.



Hereford.org | 816-842-3757

Hereford bulls increase net profit by \$51 per cow per year.

That's \$20,000 in additional revenue for a typical 400-cow outfit, thanks to increased fertility and herd size.

Herefords are also the efficiency experts, proven to add value to calves in the feedyard — \$30 per head in profitability.

7%

Higher pregnancy rates

\$51

More Per Cow, Per Year

\$20

Advantage in Feed Efficiency

\$30

Advantage in Feedlot Profitability

COME HOME TO HEREFORD.

ADD VALUE

WITH FEEDER CATTLE & REPLACEMENT FEMALE PROGRAMS



HEREFORD ADVANTAGE

An industry-changing feeder cattle marketing program through IMI Global to verify and add value to Hereford-influenced feeder cattle with superior genetics, health and management.



MATERNAL ADVANTAGE

A unique marketing program designed to add value to Hereford-sired commercial replacement females with added fertility, feed efficiency, profitability and docility.



PREMIUM RED BALDY

Take advantage of hybrid vigor by maximizing the best traits of Hereford and Red Angus genetics that provide commercial producers with premium replacement females.



LEARN MORE ABOUT THESE PROGRAMS



AMERICAN HEREFORD ASSOCIATION
816.842.3757 | WWW.HEREFORD.ORG

Understanding Hereford Expected Progeny Differences

Calving Ease Direct (CE) is based on calving ease scores and birth weights and is measured on a percentage. CE EPD indicates the influence of the sire on calving ease in females calving at 2 years of age. For example, if sire A has a CE EPD of 6 and sire B has a CE EPD of -2, then you would expect on average sire A's calves would be born with an 8% more likely chance of being unassisted when compared to sire B's calves.

Birth Weight EPD (BW) is an indicator trait for calving ease and is measured in pounds. For example, if sire A has a BW EPD of 3 and sire B has a BW EPD of 6, then you would expect on average, sire B's calves would come 3 lb. heavier at birth when compared to sire A's calves. Larger BW EPDs usually, but not always, indicate more calving difficulty.

Weaning Weight EPD (WW) is an estimate of pre-weaning growth that is measured in pounds. For example, if sire A has a WW EPD of 70 and sire B has a WW EPD of 50, then you would expect on average sire A's calves would weigh 20 lb. heavier at weaning when compared to sire B's calves.

Yearling Weight EPD (YW) is an estimate of post-weaning growth that is measured in pounds. For example, if sire A has a YW EPD of 100 and sire B has a YW EPD of 70, then you would expect on average sire A's calves would weigh 30 lb. heavier at a year of age when compared to sire B's calves.

Maternal Milk EPD (MM) the milking ability of a sire's daughters is expressed in pounds of calf weaned. It predicts the difference in average weaning weights of sires' daughters' progeny due to milking ability. Daughters of the sire with a 30 MM EPD should produce progeny with 205-day weights averaging 15 lb. more (as a result of greater milk production) than daughters of a bull with a 15 MM EPD.

Maternal Milk & Growth (M&G) reflects what the sire is expected to transmit to his daughters for a combination of growth genetics through weaning and genetics for milking ability. It is an estimate of daughters' progeny weaning weight. A bull with a 29 lb. M&G EPD should sire daughters with progeny weaning weights averaging 19 lb. heavier than progeny of a bull's daughters with a M&G EPD of 10 lb. (29 minus 10 = 19 lb.). It is equal to one-half the sire's weaning weight EPD, plus all of his MM EPD. No accuracy is associated with this since it is simply a mathematical combination of two other EPDs.

Rib Fat (FAT) reflects differences in adjusted 365-day, 12th-rib fat thickness based on carcass measurements of harvested cattle. Sires with low, or negative FAT EPDs are expected to produce leaner progeny than sires with higher EPDs. Ultrasound measures are also incorporated into this trait and have been shown to be highly correlated with the performance of slaughter progeny. All data is expressed on a carcass scale.

Rib-eye Area (REA) reflect differences in an adjusted 365-day rib-eye area measurement based on carcass measurements of harvested cattle. Sires with relatively higher REA EPDs are expected to produce better-muscled and higher percentage yielding slaughter progeny than will sires with lower REA EPDs. Ultrasound measurements are also incorporated into this trait and have been shown to be highly correlated with the performance of slaughter progeny.

Marbling EPD (MARB) reflect differences in an adjusted 365-day marbling score (intramuscular fat, [IMF]) based on carcass measurements of harvested cattle. Higher MARB EPDs should produce slaughter progeny with a higher degree of IMF and therefore higher quality grades. Ultrasound measurements are also incorporated into this trait and have been shown to be highly correlated with the performance of slaughter progeny.

Baldy Maternal Index (\$BMI) a maternally focused index that is based on a production system that uses Hereford x Angus cross cows. Progeny of these cows are directed towards Certified Hereford Beef. This index has significant weight on Sustained Cow Fertility, which predicts fertility and longevity of females. There is a slightly positive weight on Weaning Weight, Mature Cow Weight and Milk which accounts for enough growth but ensures females do not increase inputs. Also, but a positive weighting on Carcass Weight which is anticipated to provide profitability from finishing of non-replacement. Females and castrated males. Marbling and Rib-eye Area are also positively weighted to keep the harvested progeny successful for CHB. This index is geared to identify Hereford bulls that will be profitable when used in a rotational cross with mature commercial Angus cows.

Certified Hereford Beef Index (\$CHB) is a terminal sire index that is built on a production system where Hereford bulls are mated to mature commercial Angus cows and all progeny will be targeted for Certified Hereford Beef after the finishing phase. This index has significant weight on Carcass Weight to ensure profit on the rail. As well there is a positive weighting for Average Daily Gain along with a negative weighting on Dry Matter Intake to ensure efficient pounds of growth in the finishing phase. Keep in mind, this production system takes advantage of complimentary breeding with the commercial Angus cow. Although Marbling is weighted positively in this index, a positive weighting for Rib-eye Area and a negative weighting for Back Fat are a greater priority in this index to allow for optimum end-product merit.

Ratios are based on contemporary groups. Average within the group would be a 100 ratio. 110 would be 10% higher than average. Generally, a lower ratio = smaller

Breed Average EPDS

CED + 3.3
 BW + 2.7 REA + .43
 WW + 55 MARB + .13
 YW + 89 BMI\$ +357
 SC + 1 CHB\$ 117
 MILK + 26
 M&G + 54
 FAT +0.019

DaKitch Bulls Average EPDS

CED + 2.1
 BW + 2.7 REA + .49
 WW + 68 MARB + .16
 YW + 112 BMI\$ +370
 SC + 1.3 CHB\$ 118
 MILK + 30
 M&G + 64
 FAT +0.039

** EPDs current as of February 19th 2024 and updated weekly by the American Hereford Association



The Power of Genomically Enhanced EPDs

The American Hereford Association (AHA) has embraced the use of genomics into their genetic evaluation by launching a first of its kind single step analysis that utilizes the marker effects of specific traits. Likewise, AHA is directly estimating accuracy values rather than approximating. The direct estimation of accuracy results in a more conservative value but a more accurate value than previous methodologies. The AHA is producing the most reliable genetic evaluation that is supported by Whole Herd TPR™ and genomics, which will give prospective buyers added confidence in purchasing young and unproven animals.

Buying animals that have a genomic profile incorporated into their Expected Progeny Difference (EPD) offers many advantages that allow for quicker breed and herd improvement. Below is a table showing the average increase in accuracy when buying a young animal with a Genomic Enhanced EPD (GE-EPD) versus an animal without a GE-EPD. Similarly, an effective progeny number increase is listed by trait that shows how many progeny equate to a genomic enhancement of a young animal (e.g. yearling). That's right, buying a young animal that has been genotyped is like having 2-17 progeny, depending on the trait. The proof gained on young, non-parent animals, through a genomic enhancement is valuable and greatly mitigates the risk and allows for more directed selection.



Each animal tested is recognized with the AHA GE-EPD logo.

AHA Trait	Accuracy Improvement	Effective Progeny Number Increase*
Calving Ease	0.09	17
Birth Weight	0.12	8
Weaning Weight	0.14	12
Yearling Weight	0.16	9
Scrotal Circumference	0.17	6
Mature Cow Weight	0.12	4
Udder Suspension	0.17	7
Teat Size	0.17	7
Carcass Weight	0.11	3
Fat	0.08	2
Rib-Eye Area	0.07	2
Marbling	0.10	3

* Effective Progeny Number Increase (EPNI)- EPNI is the difference gained for genotyped animals versus non-genotyped animals.



TH MASTERPLAN 183F

REG # P43920493 Homozygous Polled DOB: 02/10/2018

SCHU-LAR ON TARGET 22S
KCF BENNETT STRATEGY Z303 ET
KCF MISS REVOLUTION X338 ET

SCHU-LAR 5N OF 9L 3008
SCHU-LAR 208 OF 1H 121 ET
MSU TCF REVOLUTION 4R
JW 718 VICTORIA 9106

FTF PROSPECTOR 145Y
TH 512X 145Y DOMINETTE 57B
TH 122 71H DOMINETTE 512X ET

HUTH PROSPECTOR K085
FTF CHICK A BOOM 7227T
DRF JWR PRINCE VICTOR 71H
KBCR 19D DOMINETTE 122

CE	BW	WW	YW	MILK	M&G	FAT	REA	MARB	BMI \$	CHB \$
2.7	1.7	69	125	31	65	0.069	0.52	0.49	407	151

Sire to lots 1-7

Masterplan has solidified himself in the breed as a leader for performance and marbling, with progeny boasting an impressive IMF ratio of 111. He presents an outcross to today's popular pedigrees while delivering consistent pigment, shedding ability, beautiful daughters, and stout sons.



TH MASTERPLAN 183F

TH 183F JOINT VENTURE 121J

REG # P44225960 Homozygous Polled DOB: 01/10/2021

KCF BENNETT STRATEGY Z303 ET
TH MASTERPLAN 183F
TH 512X 145Y DOMINETTE 57B

SCHU-LAR ON TARGET 22S
KCF MISS REVOLUTION X338 ET
FTF PROSPECTOR 145Y
TH 122 71H DOMINETTE 512X ET

TH 403A 475Z PIONEER 358C ET
TH 477Y 358CCASSANDRA 116F
TH 43P 719T CASSANDRA 477Y ET

TH 89T 755T STOCKMAN 475Z
TH 71U 17Y RITA 403A
TH 122 71H VICTOR 719T
TH 121L 8146 CASSANDRA 43P

CE	BW	WW	YW	MILK	M&G	FAT	REA	MARB	BMI \$	CHB \$
4.2	2.2	75	125	27	64	0.101	0.47	0.18	406	117

Sire to lots 9-15 & 26

121J progeny are like 183F progeny in terms of type and kind, with the addition of another outstandingly consistent maternal Dam, 116F. Progeny are moderate at birth, along with excellent performance, while still excelling in maternal traits.



TH 183F JOINT VENTURE 121J

DAKITCH MDK 181E STRATEGY 69H

REG # 44180262 Homozygous Polled DOB: 02/23/2020

SCHU-LAR ON TARGET 22S
KCF BENNETT STRATEGY Z303 ET
KCF MISS REVOLUTION X338 ET

SCHU-LAR 5N OF 9L 3008
SCHU-LAR 208 OF 1H 121 ET
MSU TCF REVOLUTION 4R
JW 718 VICTORIA 9106

EXR CROSSROADS 466 ET
MS DAKITCH MDK Y869 DIVA 181E
E 337U DIVA Y869

NJW 73S M326 TRUST 100W ET
TH 90W 755T MS DOM 28Z
HARVIE SAFNBFI COLATERAL 337U
E M211 LADY RANGER U869

CE	BW	WW	YW	MILK	M&G	FAT	REA	MARB	BMI \$	CHB \$
3.8	3.6	77	117	34	72	0.019	0.74	0.16	410	137

Sire to lot 8

See more info on page 39



DAKITCH MDK 181E STRATEGY 69H

TH FRONTIER 174E

REG # 43818822 Homozygous Polled DOB: 01/30/2017

TH 89T 755T STOCKMAN 475Z
TH 403A 475Z PIONEER 358C ET
TH 71U RITA 403A

TH 223 71I VICTOR 755T
TH 16G 20N GEMINI 89T
TH 22R 16S LAMBEAU 17Y
TH 7N 45P RITA 71U

NJW 73S M326 TRUST 100W ET
FTF TRUSTING LADY 312A
FTF BOOM AND BLOOM 8211U

KCF BENNETT 3008 M326
NJW P606 72N DAYDREAM 73S
FTF BOOMER 29F 551R
FTF LEANNA 480P

CE	BW	WW	YW	MILK	M&G	FAT	REA	MARB	BMI \$	CHB \$
7.6	0.5	74	123	44	81	0.089	0.61	-0.13	\$394	\$108

Sire to lot 16

A well balanced, heavy-muscled bull that is sound-structured and has the look of a big-time herd bull. He combines all of this with a curve-bending set of EPD's



TH FRONTIER 174E

TH 523F 738C SLEEP ON 163H

REG # P44140749 Homozygous Polled DOB: 01/16/2020

HYALITE ON TARGET 936
BAR JZ SLEEP ON 738C
BAR JZ VIRGINIA 500Y

SCHU-LAR ON TARGET 22S
HYALITE TS LASS 310
TH 122 71I VICTOR 719T
BAR JZ KYLIE 425S

TH 403A 475Z PIONEER 358C ET
TH 4021 358C JEWELL 523F ET
INNISFAIL 723 U208 4021 ET

TH 89T 755T STOCKMAN 475Z
TH 71U 17Y RITA 403A
EF BEEF TFL U208 TESTED X651 ET
INNISFAIL P230 T723

CE	BW	WW	YW	MILK	M&G	FAT	REA	MARB	BMI \$	CHB \$
13.3	-2.4	59	82	40	70	0.061	0.25	0.41	369	132

Sire to lot 17 & 25

An exciting, calving ease sire. Sleep on's pedigree traces back to Tested X651, the marbling king of the hereford breed.



TH 523F 738C SLEEP ON 163H

CRR G16 EARLY VOTING 193 ET

REG # P44299467 Homozygous Polled DOB: 02/27/2021

NJW 79Z Z31I ENDURE 173D ET
LOWEN GENESIS G16 ET
LOEWEN 77 48 MISS 344N 4RB42ET

KCF BENNETT ENCORE Z31I ET
BW 91H 100W RITA 79Z ET
MSU TCF REVOLUTION 4R
PCR JACKLYN NIKOLE 344N

UPS SENSATION 2296 ET
CRR 2296 ECLIPSE 755
CRR 4037ECLIPSE 173

CHURCHILL SENSATION 028X
UPS JT MISS NOEN 781I 1ET
THM DURANGO 4037
CRR 63N ECLIPSE 890

CE	BW	WW	YW	MILK	M&G	FAT	REA	MARB	BMI \$	CHB \$
-4.2	6.1	82	135	38	78	0.071	0.84	0.19	417	163

Sire to lot 19-22

Early Voting was our selection for CRR in 2022. A high quality bull selected for maternal power, high growth, carcass traits.



CRR G16 EARLY VOTING 193 ET



1

DK 1 DAKITCH MDK 471 MASTER 41L

REG # P44441298 Tattoo: MDK 41L [DLF,HYF,IEF,MSUDF]
 DOB: 01/19/2023 POLLED Eye Pigment (RE/LE): 30/10

KCF BENNETT STRATEGY Z303 ET SCHU-LAR ON TARGET 22S
 TH MASTERPLAN 183F KCF MISS REVOLUTION X338 ET
 TH 512X 145Y DOMINETTE 57B FTF PROSPECTOR 145Y
 TH 122 71I DOMINETTE 512X ET

CMR GVP MR MATERNAL 156T PW VICTOR BOOMER P606
 CRR 156T ECLIPSE 471 JG WCN VICTRA 17 2103
 CRR 719 ECLIPSE 101 TH 122 71I VICTOR 719T
 CRR 63N ECLIPSE 982



Actual BW	Adj. WW	WW Ratio
96	784	111

	CE	BW	WW	YW	MILK	M&G	FAT	REA	MARB	BMI \$	CHB \$
EPD	-2.7	3.8	73	121	31	67	0.041	0.54	0.26	423	136
%	91	74	3	2	27	8	74	29	17	15	19

Big stout Masterplan son backed by a powerful cow family. If you sell calves by the pound make sure this guy is on your list! Grandmother 101 is a Dam of Distinction Mother Ratio's WW 102 YW 100.3 REA 108



DK 2 DAKITCH MDK 24F MASTER 7L

REG # P44441298 Tattoo: MDK 7L [DLF,HYF,IEF,MSUDF]
 DOB: 12/26/2022 POLLED Eye Pigment (RE/LE): 100/100

KCF BENNETT STRATEGY Z303 ET SCHU-LAR ON TARGET 22S
 TH MASTERPLAN 183F KCF MISS REVOLUTION X338 ET
 TH 512X 145Y DOMINETTE 57B FTF PROSPECTOR 145Y
 TH 122 71I DOMINETTE 512X ET

CRR 109 CATAPULT 322 CRR 719 CATAPULT 109
 MS DAKITCH MSK 53D DREAMER 24F CRR 713 KELLY 0117
 MS DAKITCH MDK DREAMER 53D TH 400U 32X TRUMP 206Z
 MS DAKITCH LADY MASTER 95S



Actual BW	Adj. WW	WW Ratio
86	831	117

	CE	BW	WW	YW	MILK	M&G	FAT	REA	MARB	BMI \$	CHB \$
EPD	2.6	2.9	72	119	28	64	0.031	0.68	0.20	356	135
%	56	54	3	2	43	14	62	11	27	52	19

Big long bodied bull that is sure to get out and cover alot of cows.
 Mothers Ratio's WW 108 YW 104



2

D K 3 DAKITCH MDK 5F MASTER 37L

REG # P44441477 Tattoo: MDK 37L {DLF,HYF,IEF,MSUDF}
 DOB: 01/16/2023 POLLED Eye Pigment (RE/LE): 100/100

KCF BENNETT STRATEGY Z303 ET SCHU-LAR ON TARGET 22S
 TH MASTERPLAN 183F KCF MISS REVOLUTION X338 ET
 TH 512X 145Y DOMINETTE 57B FTF PROSPECTOR 145Y
 TH 122 71I DOMINETTE 512X ET

CRR 109 CATAPULT 322 CRR 719 CATAPULT 109
 MS DAKITCH MDK 96D FELINA 5F CRR 713 KELLY 0117
 MS DAKITCH MDK 59A FELINA 96D TH 400U 32X TRUMP 206Z
 MS DAKITCH MDK FELINA 59A



Actual BW	Adj. WW	WW Ratio
92	766	108

	CE	BW	WW	YW	MILK	M&G	FAT	REA	MARB	BMI \$	CHB \$
EPD	0.1	3.9	71	121	26	62	0.021	0.61	0.20	363	136
%	77	76	4	2	57	23	45	19	27	48	18

This bull gets us really excited, freckled faced, dark red, stout made. He is sure to sire calves that will grow!
 Mother Ratios WW 106 YW 105



Maternal Sister
 to lot 3
 Second high selling
 Bred heifer on our
 Fall 2023 Online
 Sale

D K 4 DAKITCH MDK 155F MASTER 48L

REG # P44441439 Tattoo: MDK 48L {DLF,HYF,IEF,MSUDF}
 DOB: 01/22/2023 POLLED Eye Pigment (RE/LE): 100/100

KCF BENNETT STRATEGY Z303 ET SCHU-LAR ON TARGET 22S
 TH MASTERPLAN 183F KCF MISS REVOLUTION X338 ET
 TH 512X 145Y DOMINETTE 57B FTF PROSPECTOR 145Y
 TH 122 71I DOMINETTE 512X ET

DPH 6129 TAKE OFF 502 ET CRR 719 CATAPULT 109
 MS DAKITCH MDK60C MACKLIZ 155F BR DM GEISHA 6129
 MS DAKITCH MDK MACK LIZ 60C TH 400U 32X TRUMP 206Z
 MS DAKITCH MDK MACK LIZ 104X



Actual BW	Adj. WW	WW Ratio
83	740	104

	CE	BW	WW	YW	MILK	M&G	FAT	REA	MARB	BMI \$	CHB \$
EPD	2.5	2.1	65	107	28	60	0.041	0.44	0.30	382	133
%	57	35	16	11	48	30	74	50	12	27	22

If you want to raise replacement females this guy is your ticket! From the great Mack Liz Cow family, know for udder quality, milk flow & longevity. Mother is a Dam of Distinction and ratios WW 107 YW 106

Maternal Brother
 to lot 3
 Sale Feature form
 2021 Bull Sale





Mother to Lot 5



Grandmother to lots 5 & 6
"Z14"



Maternal Sisters
to lot 5



Hereford Bulls || Page 14

DK 5 DAKITCH MDK 125F MR KAREN 10L

REG # P4441436 Tattoc: MDK 10L (DLF,HYF,IEF,MSUDF)
DOB: 01.01.2023 POLLED Eye Pigment (RE/LE): 100/100

KCF BENNETT STRATEGY Z303 ET
TH MASTERPLAN 183F
TH 512X 145Y DOMINETTE 57B
SCHU-LAR ON TARGET 22S
KCF MISS REVOLUTION X338 ET
FTF PROSPECTOR 145Y
TH 122 71H DOMINETTE 512X ET

NJW 135U 10Y HOMETOWN 27A
MS DAKITCH MDK KAREN 125F ET
MOHICAN KAREN Z14
NJW 73S W18 HOMETOWN 10Y ET
NJW 4037 34S DURANGO VACA 135U
TH 133U 719T UPGRADE 69X
ANL 35U VICTORIA 59X



Actual BW	Adj. WW	WW Ratio
86	846	119

	CE	BW	WW	YW	MILK	M&G	FAT	REA	MARB	BMI \$	CHB \$
EPD	0.2	3.1	76	126	34	72	0.051	0.60	0.22	385	126
%	75	56	2	1	11	2	85	20	22	30	32

Super dark red Masterplan son, a true standout for our 2024 offering, just ask Dawson & Dutton. Mr. Karen is the most talked about bull in the barn! Dawson has shown both his maternal sisters so Karen was a common name the last few years in the show barn. So when Mamma Karen final had a bull the boys decided he had to be named Mr. Karen. We unfortunately lost the great 125F cow this summer. Mr. Karen will be used in our AI program in 2024. Terms to be announced sale day Mothers Ratios WW 117 YW 111



Great -Grandmother to lot 5 & 6
"59X"



Great Great -Grandmother to lots 5 & 6
"94U"



Maternal Brothers
to lot 6



DK 6 DAKITCH MDK 140F MASTER 26L

REG # P44441434 Tattoo: MDK 26L [DLF,HYF,IEF,MSUDE]
DOB: 01/09/2023 POLLED Eye Pigment (RE/LE): 90/100

KCF BENNETT STRATEGY Z303 ET SCHU-LAR ON TARGET 22S
TH MASTERPLAN 183F KCF MISS REVOLUTION X338 ET
TH 512X 145Y DOMINETTE 57B FTF PROSPECTOR 145Y
TH 122 711 DOMINETTE 512X ET

NJW 135U 10Y HOMETOWN 27A NJW 73S W18 HOMETOWN 10Y ET
MS DAKITCH MDK KAREN 140F ET NJW 4037 34S DURANGO VACA 135U
MOHICAN KAREN Z14 TH 133U 719T UPGRADE 69X
ANL 35U VICTORIA 59X



Actual BW	Adj. WW	WW Ratio
84	697	98

	CE	BW	WW	YW	MILK	M&G	FAT	REA	MARB	BMI \$	CHB \$
EPD	2.9	2.0	62	106	33	64	0.051	0.49	0.22	413	127
%	53	33	25	13	18	16	85	39	23	20	29

The Karen cow family needs no introduction.
Mother is a Dam of Distinction ratios WW 108 YW 103



DK 7 DAKITCH MDK 72C MASTER 15L

REG # 44441319 Tattoo: MDK 15L {DLF,HYF,IEF,MSUDF}
 DOB: 01.05.2023 POLLED Eye Pigment (RE/LE): 100/100

KCF BENNETT STRATEGY Z303 ET SCHU-LAR ON TARGET 22S
 TH MASTERPLAN 183F KCF MISS REVOLUTION X338 ET
 TH 512X 145Y DOMINETTE 57B FTF PROSPECTOR 145Y
 TH 122 71I DOMINETTE 512X ET
 TH 400U 32X TRUMP 206Z
 MS DAKITCH MDK COVERGIRL 72C ET HAROLDSONS TRUMP 16R ET 32X
 MS DAKITCH LADY MASTER 95S TH 605F 45P PRIMROSE 400U ET
 DAKITCH TANK MASTER 57P
 MS DAKITCH DOMINO 41N



Actual BW	Adj. WW	WW Ratio
85	646	91

	CE	BW	WW	YW	MILK	M&G	FAT	REA	MARB	BMI \$	CHB \$
EPD	1.5	3.0	65	112	22	55	0.031	0.48	0.24	363	130
%	66	56	15	6	82	56	62	41	20	48	26

Another functional well built Masterplan son. Many brothers have sold well over the past few years.



Maternal Brother to lot 7



Maternal Brother to lot 7



Maternal Brother to lot 7



Mother to lot 8 "117D"



Maternal Sister to lot 8



DK 8 DAKITCH 117D STRATEGY 24L

REG # P44441435 Tattoo: DHK 824L {DLF,HYF,IEF,MSUDF}
 DOB: 01.09.2023 Eye Pigment (RE/LE): 100/100

KCF BENNETT STRATEGY Z303 ET SCHU-LAR ON TARGET 22S
 DAKITCH MDK 181E STRATEGY 69H KCF MISS REVOLUTION X338 ET
 MS DAKITCH MDK Y869 DIVA 181E EXR CROSSROADS 466 ET
 E 337U DIVA Y869
 RF LOGICAL CHOICE 55W KJ C&L J119 LOGIC 023R ET
 MC LADY ANNABELLUM 117D LLF PROSPECT SUE H5
 MC RED LADY 60Y SHF RED MAN 236G R72
 MC GINA 122R



Actual BW	Adj. WW	WW Ratio
86	687	97

	CE	BW	WW	YW	MILK	M&G	FAT	REA	MARB	BMI \$	CHB \$
EPD	4.0	2.3	63	99	25	56	0.001	0.54	0.13	311	126
%	43	39	22	26	68	48	17	29	45	80	32

This guy is a truck, rugged built bull that is ready to get out and cover cows. Sired by our 69H bull that highlighted our 2021 Bull Sale for \$18,500. The 69H females we have are just coming into production this year and are to die for! Big stout made cattle that are production oriented.



Maternal Brother
to lot 9



Maternal Brother
to lot 10



D K 9 **DAKITCH 19B JV 77L**

REG # P44441286 Tattoo: DHK 77L {DLF,HYF,IEF,MSUDF}
 DOB: 02/19/2023 SCURRED Eye Pigment (RE/LE): 100/100

TH MASTERPLAN 183F KCF BENNETT STRATEGY Z303 ET
 TH 183F JOINT VENTURE 121J TH 512X 145Y DOMINETTE 57B
 TH 477Y 358C CASSANDRA 116F TH 403A 475Z PIONEER 358C ET
 TH 43P 719T CASSANDRA 477Y ET

TH 400U 32X TRUMP 206Z HAROLDSONS TRUMP 16R ET 32X
 MS DAKITCH36N BABY TRUMP 19B TH 605F 45P PRIMROSE 400U ET
 MS DAKITCH GRAND LADY 36N C&H GRAND SLAM
 MS DAKITCH POLLY 37J



Actual BW	Adj. WW	WW Ratio
90	807	114

	CE	BW	WW	YW	MILK	M&G	FAT	REA	MARB	BMI \$	CHB \$
EPD	2.4	3.3	74	123	27	64	0.051	0.42	0.16	407	110
%	58	63	2	1	55	17	85	54	37	22	65

When we seen the Joint Venture bull we knew we had to use him in our AI program. 77L is super thick from end to end. From the popular and most well know foundation cow families here at DaKitch. Mother is a DOD and Ratios WW 109 YW 105

D K 10 **DAKITCH MDK F121 JV 68L**

REG # P44441448 Tattoo: MDK 68L {DLF,HYF,IEF,MSUDF}
 DOB: 02/10/2023 Eye Pigment (RE/LE): 100/100

TH MASTERPLAN 183F KCF BENNETT STRATEGY Z303 ET
 TH 183F JOINT VENTURE 121J TH 512X 145Y DOMINETTE 57B
 TH 477Y 358C CASSANDRA 116F TH 403A 475Z PIONEER 358C ET
 TH 43P 719T CASSANDRA 477Y ET

E Z712 SCHATZEE D31 E 4L SCHATZEE ET Z712
 E D31 JAN F121 E T719 LADY BRAXTON Z855
 E 08X MISS MONTANA A029 SNOWSHOE 743 REGULATOR 08X
 E S638 SHIRLEY X63



Actual BW	Adj. WW	WW Ratio
84	774	109

	CE	BW	WW	YW	MILK	M&G	FAT	REA	MARB	BMI \$	CHB \$
EPD	2.2	2.8	64	109	31	63	0.051	0.48	0.18	373	116
%	60	51	18	10	27	19	85	41	32	41	52

Super dark red bull with a little more frame to him
 Mother Ratios WW 108 YW 103 REA 106 IMF 113



Mother
"410D"



Maternal Brother
to Lot 11

D K 11 DAKITCH MDK 410D JV 60L

REG # P44441442 Tattoo: MDK 60L {DLF,HYF,IEF,MSUDE}
DOB: 01/30/2023 Eye Pigment (RE/LE): 100/100

TH MASTERPLAN 183F
TH 183F JOINT VENTURE 121J
TH 477Y 358C CASSANDRA 116F

KCF BENNETT STRATEGY Z303 ET
TH 512X 145Y DOMINETTE 57B
TH 403A 475Z PIONEER 358C ET
TH 43P 719T CASSANDRA 477Y ET

TH 113W 11X HI-TECH 17A
MOHICAN CARMEL 410D ET
MOCHICAN CARMEL 6X

TH 71U 719T MR HEREFORD 11X
TH 105S 755T GEMINI 113W
TDP VINTAGE 402U ET
MOHICAN CARMEL 235R ET



Actual BW	Adj. WW	WW Ratio
77	729	103

	CE	BW	WW	YW	MILK	M&G	FAT	REA	MARB	BMI \$	CHB \$
EPD	4.8	1.6	62	103	29	60	0.051	0.37	0.18	358	115
%	36	25	26	19	39	31	85	65	32	51	53

Big time herd bull prospect! Big dark red eyes, long bodied and huge hipped bull. His mother is a perfect uddered cow that ratios WW 110 YW 106 REA 113

D K 12 DAKITCH MDK 147H JV 104L

REG # P44441446 Tattoo: MDK 104L {DLF,HYF,IEF,MSUDE}
DOB: 03/01/2023 Eye Pigment (RE/LE): 100/60

TH MASTERPLAN 183F
TH 183F JOINT VENTURE 121J
TH 477Y 358C CASSANDRA 116F

KCF BENNETT STRATEGY Z303 ET
TH 512X 145Y DOMINETTE 57B
TH 403A 475Z PIONEER 358C ET
TH 43P 719T CASSANDRA 477Y ET

CRR 322 CATAPULT 697
MS DAKITCH MDK471 ECLIPSE 147H
CRR 156T ECLIPSE 471

CRR 109 CATAPULT 322
CRR 719T ECLIPSE 215
CMR GVP MR MATERNAL 156T
CRR 719 ECLIPSE 101



Actual BW	Adj. WW	WW Ratio
84	745	113

	CE	BW	WW	YW	MILK	M&G	FAT	REA	MARB	BMI \$	CHB \$
EPD	3.4	2.0	63	104	31	62	0.061	0.65	0.08	449	127
%	49	33	24	17	26	21	92	14	62	8	30

Youngest hereford bull in the offering, just a March calf with all the bells and whistles. Mother is a great uddered 697 daughter. Comes from the same cow family as lot 1



Grandmother to lots 12
"471"





Mother
"29C"



Maternal Brothers
to Lot 13



13

D K 13 DAKITCH MDK 29C JV 82L

REG # P44441304 Tattoo: MDK 82L {DLF,HYF,IEF,MSUDF}
 DOB: 02/22/2023 SCURRED Eye Pigment (RE/LE): 0/0
 TH MASTERPLAN 183F KCF BENNETT STRATEGY Z303 ET
 TH 183F JOINT VENTURE 121J TH 512X 145Y DOMINETTE 57B
 TH 477Y 358C CASSANDRA 116F TH 403A 475Z PIONEER 358C ET
 TH 43P 719T CASSANDRA 477Y ET
 TH 400U 32X TRUMP 206Z HAROLDSONS TRUMP 16R ET 32X
 MS DAKITCH MDK CLASSY MISS 29CET TH 605F 45P PRIMROSE 400U ET
 MS DAKITCH LADY MASTER 95S DAKITCH TANK MASTER 57P
 MS DAKITCH DOMINO 41N



Actual BW	Adj. WW	WW Ratio
89	783	112

	CE	BW	WW	YW	MILK	M&G	FAT	REA	MARB	BMI \$	CHB \$
EPD	2.0	3.5	69	115	30	64	0.061	0.49	0.12	364	107
%	62	68	7	4	35	15	92	39	48	47	72

Over the years 29C has consistently produced big high performing herd bulls, and we feel like this Joint Venture son is the best one to date!
 Mother Ratios WW 115 YW 108

D K 14 DAKITCH MDK 28E JV 54L

REG # P44441302 Tattoo: MDK 54L {DLF,HYF,IEF,MSUDF}
 DOB: 01/28/2023 POLLED Eye Pigment (RE/LE): 100/100
 TH MASTERPLAN 183F KCF BENNETT STRATEGY Z303 ET
 TH 183F JOINT VENTURE 121J TH 512X 145Y DOMINETTE 57B
 TH 477Y 358C CASSANDRA 116F TH 403A 475Z PIONEER 358C ET
 TH 43P 719T CASSANDRA 477Y ET
 CRR 719 CATAPULT 109 TH 122 71I VICTOR 719T
 MS DAKITCH MDK AURORA 28E ET CRR 4037 ECLIPSE 808
 MS DAKITCH LADY MASTER 95S DAKITCH TANK MASTER 57P
 MS DAKITCH DOMINO 41N



Actual BW	Adj. WW	WW Ratio
83	655	92

	CE	BW	WW	YW	MILK	M&G	FAT	REA	MARB	BMI \$	CHB \$
EPD	3.3	2.4	61	104	30	60	0.031	0.33	0.08	332	104
%	50	42	32	17	33	30	62	73	62	68	78

Full pigmentation, great feet bull that comes from the great Lady M cow family.
 Mother ratios WW 109 YW 110



14



Maternal Brother
to lot 14



Maternal Sister
to lot 14



**D
K 15**

DAKITCH MEK 121D JV 66L

REG # P44441447 Tattoo: MEK 66L {DLF,HYF,IEF,MSUDF}
 DOB: 02/09/2023 SCURRED Eye Pigment (RE/LE): 100/100

TH MASTERPLAN 183F
 TH 183F JOINT VENTURE 121J
 TH 477Y 358C CASSANDRA 116F

KCF BENNETT STRATEGY Z303 ET
 TH 512X 145Y DOMINETTE 57 B
 TH 403A 475Z PIONEER 358C ET
 TH 43P 719T CASSANDRA 477Y ET

EXR CROSSROADS 466 ET
 MS DAKITCH MEK BONITA 121D
 MS DAKITCH MEK BONITA 126A

NJW 73S M326 TRUST 100W ET
 TH 90W 755T MS DOM 28Z
 VCR S&S 525R FRANCHISE 829U
 MS DAKITCH 65F MIKITCH 43S



Actual BW	Adj. WW	WW Ratio
85	765	108

	CE	BW	WW	YW	MILK	M&G	FAT	REA	MARB	BMI \$	CHB \$
EPD	1.3	2.3	67	112	30	64	0.051	0.48	0.21	419	123
%	68	39	11	6	30	16	85	41	25	17	37

Massive built bull loaded with red meat ,mother is a picture perfect Crossroads daughter.

**D
K 16**

DAKITCH MDK 8236 FRONTIER 30L

REG # P44441426 Tattoo: MDK 30L {DLF,HYF,IEF,MSUDF}
 DOB: 01/11/2023 Eye Pigment (RE/LE): 100/100

TH 403A 475Z PIONEER 358C ET
 TH FRONTIER 174E
 FTF TRUSTING LADY 312A

TH 89T 755T STOCKMAN 475Z
 TH 71U RITA 403A
 NJW 73S M326 TRUST 100W ET
 FTF BOOM AND BLOOM 8211U

KOLT CHICAGO 2004 ET
 EXR PRIMROSE 8236 ET
 TH 400U 755T PRIMROSE 233B

CRR 719 CATAPULT 109
 CHEZ STRAWBERRY WINE ET 204Z
 TH 223 71I VICTOR 755T
 TH 605F 45P PRIMROSE 400U ET



Actual BW	Adj. WW	WW Ratio
85	670	95

	CE	BW	WW	YW	MILK	M&G	FAT	REA	MARB	BMI \$	CHB \$
EPD	1.7	2.2	65	106	37	69	0.051	0.41	-0.05	402	101
%	65	37	17	14	5	5	85	57	95	24	84

Recommended for use on heifers. Frontier daughters in production are beautiful uddered and heavy milking



Grandmother to lots 16
 "233B"



Maternal Brothers to Lot 16





D K 17 DAKITCH MDK 132J SLEEP ON 64L

REG # P4444144 Tattoo: MDK 64L (DLF,HYF,IEF,MSUDF)
 DOB: 01/31/2023 POLLED Eye Pigment (RE/LE): 0/0

BAR JZ SLEEP ON 738C
 TH 523F 738C SLEEP ON 163H
 TH 4021 358C JEWELL 523F ET

HYALITE TARGET 936
 BAR JZ VIRGINIA 500Y
 TH 403A 475Z PIONEER 358C ET
 INNISFAIL 723 U208 4021 ET

CHURCHILL RED BARON 8300F ET
 MC ARIANNA 132J
 MC ARIANNA 36E

R LEADER 6964
 CHURCHILL LADY 500C ET
 KJ BJ CAT-MAN-DU 288C ET
 MC ARIANNA 80A



Actual BW	Adj. WW	WW Ratio
63	768	108

	CE	BW	WW	YW	MILK	M&G	FAT	REA	MARB	BMI \$	CHB \$
EPD	13.1	-1.7	64	96	37	69	0.041	0.43	0.26	398	124
%	1	1	20	35	5	5	75	51	16	26	35

Calving easy deluxe!! Its hard to find a bull with a CED for 13.1. 64L will be making an impacted in our heifer pen this spring! Selling 1/2 Interest 1/2 Possession. DaKitch will be using till June 1, 2024.
 Mother ratios a 108 WW on her first calf.

D K 18 DAKITCH MEK67J FRONTRANGE 136L

REG # P4444875 Tattoo: MDK 136L (DLF,HYF,IEF,MSUDF)
 DOB: 03/20/2023 SCURRED Eye Pigment (RE/LE): 30/30

PYRAMID FRONT RANGE 6015 ET
 CRR 6015 FRONT RANGE 9135
 CRR 88X ECLIPSE 522

PYRAMID 16W 110T 9116
 FHF 408 RITA 21W
 NJW 98S R117 RIBEYE 88X ET
 CRR 4037 ECLIPSE 808

TH FRONTIER 174E
 MS DAKITCH MEK 189G BONITA 67J
 MS DAKITCH MEK110Y BONITA 189G

TH 403A 475Z PIONEER 358C ET
 FTF TRUSTING LADY 312A
 CRR 322 CATAPULT 697
 MS DAKITCH MEK BONITA 110Y



Actual BW	Adj. WW	WW Ratio
85	773	117

	CE	BW	WW	YW	MILK	M&G	FAT	REA	MARB	BMI \$	CHB \$
EPD	2.7	4.8	69	109	38	73	0.021	0.51	-0.12	355	101
%	55	89	6	10	3	2	45	35	99	53	85

Recommended for use on Heifers, Out of a hard working first calf frontier daughter.





DK 19 DAKITCH C6 EARLY VOTING 109L

REG # P44441401 Tattoo: DHK 109L [DLF,HYF,IEF,MSUDF]
 DOB: 03/05/2023 POLLED Eye Pigment (RE/LE): 100/100

LOEWEN GENESIS G16 ET
 CRR G16 EARLY VOTING 193 ET
 CRR 2296 ECLIPSE 755

NJW 79Z Z311 ENDURE 173D ET
 LOEWEN 77 48 MISS 344N 4RB42ET
 UPS SENSATION 2296 ET
 CRR 4037 ECLIPSE 173

RF LOGICAL CHOICE 55W
 MC LOGICAL GIRL C6
 MC TENDER GIRL W27

KJ C&L J119 LOGIC 023R ET
 LLL PROSPECT SUE H5
 SHF TENDERLOIN R117 T06
 MC SPICE GIRL S20



Actual BW	Adj. WW	WW Ratio
90	765	116

	CE	BW	WW	YW	MILK	M&G	FAT	REA	MARB	BMI \$	CHB \$
EPD	-2.3	4.7	74	119	29	66	0.021	0.57	0.06	297	120
%	90	87	2	3	36	10	45	25	69	86	43

This guy is super fun to look at, smooth made yet powerfully constructed.

DK 20 TK 193 METaverse 23L

REG # P44466356 Tattoo: TK 23L [DLF,HYF,IEF,MSUDF]
 DOB: 02/07/2023 HOMOZYGOUS POLLED Eye Pigment (RE/LE): 100/100

LOEWEN GENESIS G16 ET
 CRR G16 EARLY VOTING 193 ET
 CRR 2296 ECLIPSE 755

NJW 79Z Z311 ENDURE 173D ET
 LOEWEN 77 48 MISS 344N 4RB42ET
 UPS SENSATION 2296 ET
 CRR 4037 ECLIPSE 173

S MANDATE 66589 ET
 MS DAKITCH MDK 163F DIVA 98H
 MS DKITCH MDK Y869 DIVA 163F

R LEADER 6964
 S LADY DOMINO 0158X
 DPH 6129 TKE OFF 502 ET
 E 337U DIVA Y869



Actual BW	Adj. WW	WW Ratio
90	575	--

	CE	BW	WW	YW	MILK	M&G	FAT	REA	MARB	BMI \$	CHB \$
EPD	-0.2	4.0	73	115	32	68	0.051	0.56	0.13	439	123
%	79	78	3	4	22	6	85	26	45	10	36

If you like cattle that are long bodied with extra frame to them 23L checks all those boxes! Added bonus his extremely dark red hair coat!



DK 21 TK 193 FULL STACK DEVELOP 22L

REG # P44466366 Tattoo: TK 22L [DLF,HYF,IEF,MSUDF]
 DOB: 02/06/2023 SCURRED Eye Pigment (RE/LE): 100/100

LOEWEN GENESIS G16 ET
 CRR G16 EARLY VOTING 193 ET
 CRR 2296 ECLIPSE 755

NJW 79Z Z311 ENDURE 173D ET
 LOEWEN 77 48 MISS 344N 4RB42ET
 UPS SENSATION 2296 ET
 CRR 4037 ECLIPSE 173

KAR FBF LCC TEBOW 33Y
 LCC 33Y WINE & DINE 398
 LCC 7067 SAMMY GIRL 176

CRR ABOUT TIME 743
 JB REMETTE 213
 JJD LCC LIMIT UP 7067
 HAROLDSONS SAMANTHA 2E 72N



Actual BW	Adj. WW	WW Ratio
88	550	--

	CE	BW	WW	YW	MILK	M&G	FAT	REA	MARB	BMI \$	CHB \$
EPD	1.6	3.7	61	103	30	61	0.031	0.64	0.09	357	126
%	65	72	29	17	18	28	62	15	59	51	32

Long bodied son of Early Voting. Super long bodied bull that will add pounds to your calf crop.

Thank You!

The greatest part of the livestock industry is that the people you come across become friends and then FAMILY! Cody Crum, you truly are family to us here at DaKitch. You have been with us as our auctioneer since the beginning.

Thank you for all the laughs and fun times over the last 10 years! Best of luck with your passion for Refereeing!



D K 22 MS DAKITCH MDK 143F KAREN 167L

REG # P44450451 Tattoo: MDK 167L [DLF,HYF,IEF,MSUDF]
 DOB: 04/12/2023 Eye Pigment (RE/LE): 0/100

LOEWEN GENESIS G16 ET NJW 79Z Z311 ENDURE 173D ET
 CRR G16 EARLY VOTING 193 ET LOEWEN 77 48 MISS 34N 4RB42ET
 CRR 2296 ECLIPSE 755 UPS SENSATION 2296 ET
 CRR 4097 ECLIPSE 173

NJW 79Z 22Z HEAVY DUTY 72C ET NJW 67U 28M BIG MAX 22Z
 MS DAKITCH MDK KAREN 143F ET BW 91H 100W RITA 79Z ET
 MOHICAN KAREN Z14 TH 133U 719T UPGRADE 69X
 ANL 35U VICTORIA 59X



Actual BW	Adj. WW	WW Ratio
76	731	124

	CE	BW	WW	YW	MILK	M&G	FAT	REA	MARB	BMI \$	CHB \$
EPD	0.7	4.5	78	126	41	80	0.021	0.74	0.01	385	122
%	73	85	1	1	1	1	45	7	85	34	38

The Karen cow family is HOT, and this female is big, broody and powerful for only being and mid April calf. She comes with a little extra chrome, but she was born to stick out!



22



Grandmother to lot 22
 "Z14"



Mother to lot 23
 "55J"

D K 23 MS DAKITCH MDK 55J TESS 110L

REG # P44441392 Tattoo: MDK 110L Eye Pigment (RE/LE): 90/90
 DOB: 03/05/2023

LCX PERFECTO 11B ET NJW 98S R117 RIBEYE 88X ET
 BG LCC 11B PERFECTO 84F WLL ZOEY 3Z
 BG 100W NICKY 31C NJW 73S M326 TRUST 100W
 BG MS DOMINO 90Z

CRR 109 CATAPULT 322 CRR 719 CATAPULT 109
 MS DAKITCH MDK 215G TESS 55J CRR 713 KELLY 0117
 MS DAKITCH MDK 4X TESS 215G EXR CROSSROADS 466 ET
 LW 27M TESS 04X

Actual BW	Adj. WW	WW Ratio
72	578	98

	CE	BW	WW	YW	MILK	M&G	FAT	REA	MARB	BMI \$	CHB \$
EPD	7.7	0.1	59	95	33	63	0.041	0.81	-0.06	379	118
%	16	8	39	38	14	19	74	4	96	38	46

Feminine made female here sired by the popular AI sire Perfecto 84F. Mother has a picture perfect udder.



23



24

D K 24 MS DAKITCH MEK 105H BONITA 147L

REG # P4444872 Tattoo: MEK 147L
 DOB: 03/25/2023 Eye Pigment (RE/LE): 100/100

BOYD BLUEPRINT 6153 R LEADER
 RANGELINE 6153 BLUEPRINT 32J NJW 91H 100W RITA 31Z ET
 RANGELINE 108D MS FRONTIER 31G TH FRONTIER 174E
 RANGELINE 7B MS PROSPECT 108D
 TH 400U 32X TRUMP 206Z HAROLDSONS TRUMP 16R ET 32X
 MS DAKITCH MEK BONITA 105H TH 605F 45P PRIMROSE 400U ET
 MS DAKITCH MEK BONITA 121D EXR CROSSROADS 466 ET
 MS DAKITCH MEK BONITA 126A

Actual BW	Adj. WW	WW Ratio
68	583	99

	CE	BW	WW	YW	MILK	M&G	FAT	REA	MARB	BMI \$	CHB \$
EPD	6.2	1.1	59	91	31	61	0.041	0.41	0.05	418	103
%	25	17	39	48	25	28	74	57	73	17	80

If you are still in the hunt for a show heifer, 147L has the look to hit the show ring. Out of the Bonita cow family that comes from Red Oak Farms.

D K 25 MS DAKITCH MDK 58J LADY M 74L

REG # P44441313 Tattoo: MDK 74L
 DOB: 02/15/2023 POLLED Eye Pigment (RE/LE): 0/0

BAR JZ SLEEP ON 738C HYALITE TARGET 936
 TH 523F 738C SLEEP ON 163H BAR JZ VIRGINIA 500Y
 TH 4021 358C JEWELL 523F ET TH 403A 475Z PIONEER 358C ET
 INNISFAIL 723 U208 4021 ET

TH 400U 32X TRUMP 206Z HAROLDSONS TRUMP 16R ET 32X
 MS DAKITCH MDK LADY M 58J ET TH 605F PRIMROSE 400U ET
 MS DAKITCH LADY MASTER 95S DAKITCH TANK MASTER 57P
 MS DAKITCH DOMINO 41N

Actual BW	Adj. WW	WW Ratio
72	551	86

	CE	BW	WW	YW	MILK	M&G	FAT	REA	MARB	BMI \$	CHB \$
EPD	5.0	1.0	53	82	32	58	0.031	0.32	0.16	332	108
%	34	16	65	73	22	38	62	75	37	68	70

This heifer has the pedigree to make some great ones. She reminds us so much of her grandmother 95S that was a great Donor for us that could flat out produce!



25



Grandmother to lot 25 "95S"

D K 26 MS DAKITCH 102H POLLY 87L

REG # P44441396 Tattoo: DHK 87L
 DOB: 02/25/2023 Eye Pigment (RE/LE): 0/0

TH MASTERPLAN 183F KCF BENNETT STRATEGY Z303 ET
 TH 183F JOINT VENTURE 121J TH 512X 145Y DOMINETTE 57B
 TH 477Y 358C CASSANDRA 116F TH 403A 475Z PIONEER 358C ET
 TH 43P 719T CASSANDRA 477Y ET

CRR 612 MANIFEST 885 CRR 028X ROLL TIDE 612
 MS DAKITCH 137D POLLY 102H CRR 713 KELLY 112
 MS DAKITCH 10A POLLY 137D TH 400U 32X TRUMP 206Z
 MS DAKITCH 43YPOLLY 10A

Actual BW	Adj. WW	WW Ratio
72	571	97

	CE	BW	WW	YW	MILK	M&G	FAT	REA	MARB	BMI \$	CHB \$
EPD	-0.5	3.2	65	113	29	62	0.061	0.39	0.19	409	115
%	81	61	16	6	39	24	92	61	29	21	54

Cow power here, from the Polly cow family known for the great udders and high fertility.



26

Understanding Angus Expected Progeny Differences

Calving Ease Direct (CED) is expressed as a difference in percentage of unassisted births, with a higher value indicating greater calving ease in first-calf heifers. It predicts the average difference in ease with which a sire's calves will be born when he is bred to first-calf heifers.

Birth Weight EPD (BW) expressed in pounds, is a predictor of a sire's ability to transmit birth weight to his progeny compared to that of other sires.

Weaning Weight EPD (WW) expressed in pounds, is a predictor of a sire's ability to transmit weaning growth to his progeny compared to that of other sires.

Yearling Weight EPD (YW) expressed in pounds, is a predictor of a sire's ability to transmit yearling growth to his progeny compared to that of other sires.

Scrotal Circumference EPD (SC) expressed in centimeters, is a predictor of the difference in transmitting ability for scrotal size compared to that of other sires.

Maternal Milk EPD (MILK) is a predictor of a sire's genetic merit for milk and mothering ability as expressed in his daughters compared to daughters of other sires. In other words, it is that part of a calf's weaning weight attributed to milk and mothering ability.

Marbling EPD (MARB) expressed as a fraction of the difference in USDA marbling score of a sire's progeny compared to progeny of other sires.

Rib-eye Area (REA) expressed in square inches, is a predictor of the difference in rib-eye area of a sire's progeny compared to progeny of other sires.

Fat Thickness EPD (FAT) expressed in inches, is a predictor of the differences in external fat thickness at the 12th rib (as measured between the 12th and 13th ribs) of a sire's progeny compared to progeny of other sires.



Dollar value indexes, or **\$Values**, are a tool used to select for several traits at once based on a specific breeding objective. An economic index approach takes into account genetic and economic values as well as the relationships between traits to select for profit.

American Angus Association \$Value Indexes

Maternal Weaned Calf Value (\$M), an index expressed in dollars per head, predicts profitability differences in progeny due to genetics from conception to weaning. \$M is built off of a self-replacing herd model where commercial cattlemen replace 25% of their breeding females in the first generation and 20% in subsequent generations. Remaining cull females and all male progeny are sold as feeder calves. Increased selection pressure on \$M aims to decrease overall mature cow size and improve foot structure and fertility while maintaining weaning weights consistent with today's production.

Weaned Calf Value (\$W), an index expressed in dollars per head, provides the expected difference in future progeny preweaning performance from birth to weaning. \$W assumes that producers retain 20% of their female progeny for replacements and sell the rest of their cull female and male progeny as feeder calves. Over time, increased selection pressure on \$W will increase weaning and maternal milk traits while also continuing to increase mature cow size.

Feedlot Value (\$F), an index expressed in dollars per head, is the expected average difference in future progeny performance for postweaning merit compared to progeny of other sires. The underlying objective assumes commercial producers will retain ownership of cattle through the feedlot phase and sell fed cattle on a carcass weight basis with no considerations of premiums or discounts for quality and yield grade.

Grid Value (\$G), an index expressed in dollars per carcass, is the expected average difference in future progeny performance for carcass grid merit, including quality and yield grade attributes, compared to progeny of other sires.

Beef Value (\$B), an index expressed in dollars per carcass, facilitates simultaneous multi-trait genetic selection for feedlot and carcass merit. \$B represents the expected average differences in the progeny post-weaning performance and carcass value compared to progeny of other sires. This index assumes commercial producers wean all male and female progeny, retain ownership of these animals through the feedlot phase and market these animals on a quality-based carcass grid.

Combined Value (\$C), an index expressed in dollars per head, includes all traits that make up both \$M and \$B with the objective that commercial producers will replace 20% of their breeding females per year with replacement heifers retained within their own herd. The remaining cull heifer and steer progeny are then assumed to be sent to the feedlot where the producers retain ownership of those cattle and eventually sell them on a quality-based carcass merit grid.

EPDS DIRECTLY INCORPORATED INTO EACH \$VALUE

TRAIT	MATERNAL		TERMINAL			
	\$M	\$W	\$F	\$G	\$B	\$C
CED	✓					✓
BW		✓				✓
WW	✓	✓				✓
YW			✓		✓	✓
CEM	✓					✓
Milk	✓	✓				✓
MW	✓	✓				✓
DOC	✓					✓
HP	✓					✓
Claw	✓					✓
Angle	✓					✓
DMI			✓		✓	✓
CW			✓	✓	✓	✓
RE				✓	✓	✓
Marb				✓	✓	✓
Fat				✓	✓	✓

Genetic selection tools can go a long way in helping you choose your next bull. All bulls have been DNA tested with genomic enhanced EPD's. In an effort to help you streamline your search, we have pulled out several economically important, highly heritable traits that we use in bull selection. Full pedigrees and EPD profiles can be found on www.angus.org using the animals registration number. If we can be of any assistance to you as you make your way through the catalog, we would love to help you any way we can.

** EPDs current as of February 19th 2024 and updated weekly by the American Angus Association

Breed Average

CED + 6
 BW + 1.2
 WW + 61
 YW + 108
 SC + 0.86
 MILK + 27
 MARB + .63
 REA + .62
 FAT +0.013
 \$M + 62
 \$B + 138
 \$C + 241

DaKitch Bulls Averages

CED + 6
 BW + 1.6
 WW + 65
 YW + 113
 SC + 1.01
 MILK + 28
 MARB + 0.30
 REA + 0.51
 FAT + 0.031
 \$M + 64
 \$B + 115
 \$C + 214



Driving the science of better breeding

There's little room for error in the cattle business. Producers need the most advanced information to make smart selection decisions, and Angus Genetics Inc. (AGI) provides it through genomic-enhanced expected progeny differences (GE-EPDs).

EPDs that traditionally contained all pedigree, performance and progeny information now also include results from available genomic, or DNA, tests. Breeders who use genomic technology give buyers access to AGI-generated GE-EPDs that provide:

- Increased predictability and decreased risk for young and unproven animals due to enhanced accuracy of EPDs
- Better characterization of genetics for difficult-to-measure performance traits (such as carcass traits, maternal traits and feed efficiency)
- The ability to make more rapid progress for traits that are important to you, due to:
 - more accurate selection
 - easier identification of genetic outliers
 - the ability to propagate young animals with confidence earlier in their lives

In fact, GE-EPDs on unproven animals have the same amount of accuracy as if they have recorded an average of 15 progeny, depending on the trait. That's valuable insight, offered regularly through the breed's weekly national cattle evaluation at www.angus.org.

How do you know if EPDs are genomic-enhanced?

Ask your breeder, refer to the registration paper, or look for the AGI GE-EPD logo, Angus GS™ powered by partner Neogen or the HD50k by partner Zoetis.



ANGUS REFERENCE SIRES



B/D RICE STANDOUT 9065

REG # AAA 19596527 LD CAPITALIST 316 MUSGRAVE 316 STUNNER MCATL BLACKBIRD 831-1378 EXAR CONSOLIDATE 2081B ACA MIGNOLA 4536 SCR MIGNOLA 61500	DOB: 01/27/2019 CONNEALY CAPITALIST 028 LD DIXIE ERICA 2053 MCATL PURE PRODUCT 903-55 MCATL BLACKBIRD 1378-573 CONNEALY CONSENSUS 7229 EXAR SOPHIE 0107 RIVERBEND BLUEPRINT L24 S A MIGNOLA 1276
--------------------------------------------------------------------------------------------------------------------------------------------------------------------	------------------------------------------------------------------------------------------------------------------------------------------------------------------------------------------------------------------------------

CED	BW	WW	YW	SC	MILK	MARB	REA	FAT	\$M	\$B	\$C
9	1.7	72	124	0.65	29	0.77	0.72	0.043	67	151	263

Sire to lots 27,28,42



CRAWFORD GUARANTEE 9137

REG # AAA 19526770 BASIN PAYWEIGHT 1682 CONNEALY PAYRAISE PRIDE FAIR OF CONANGA 351 CONNEAALY ARMORY CRAWFORD MS ARMORY D40 GAR NEW DAY N2290	DOB: 02/19/2019 BASIN PAYWEIGHT 006S 21AR OLASS 7017 AAR TEN X 7008 S A PRIDE FAWN OF CONANGA CONNEALY ARSENAL 2174 EBBA OF CONANGA 808 B/R NEW DAY 454 GAR OBJECTIVE N906
-------------------------------------------------------------------------------------------------------------------------------------------------------------------------	--------------------------------------------------------------------------------------------------------------------------------------------------------------------------------------------------------

CED	BW	WW	YW	SC	MILK	MARB	REA	FAT	\$M	\$B	\$C
12	0	75	146	1.14	31	0.63	0.55	0.011	78	158	283

Sire to lots 31-35

A six-frame power bull with stunning phenotype and double-digit CE with EPD projections that place him in the elite top 1 percent of the breed for WW, YW, RADG and \$W.

CRAWFORD GUARANTEE 9137



DEER VALLEY GROWTH FUND

REG # AAA 19526770 BASIN PAYWEIGHT 006S BASIN PAYWEIGHT 1682 21 AR O LASS 7017 PLATTEMERE WEIGH UP K360 DEER VALLEY RITA 36113 DEER VALLEY RITA 9457	DOB: 01/22/2017 VERSMILION PAYWEIGHT J847 BASIN LUCY 3829 HARB PENDLETON 765 JH 21AR O LASS F24A SITZ UPWARD 307R BARBARA OF PLATTEMERE 337 G A R NEW DESIGN 5050 G A R EXT 614
--------------------------------------------------------------------------------------------------------------------------------------------------------------------------------	-------------------------------------------------------------------------------------------------------------------------------------------------------------------------------------------------------------

CED	BW	WW	YW	SC	MILK	MARB	REA	FAT	\$M	\$B	\$C
8	1.4	89	165	0.79	30	0.50	0.77	0.057	67	178	298

Sire to lots 29 & 30

His impeccable EPD profile provides modest Calving Ease with off the charts growth and end product values. He ranks among the Angus breed's most elite 1 percent for WW, YW, CW, \$W, \$F and \$B.



D
K 27

DAKITCH 58C STANDOUT 61L

REG # AAA Tattoo: 61L DOB: 01/31/2023

MUSGRAVE 316 STUNNER
B/D RICE STANDOUT 9065
ACA MIGNOLA 4536

LD CAPITALIST 316
MCATL BLACKBIRD 831-1378
EXAR CONSOLIDATE 2081B
SCR MIGNOLA 61500

VISION UNANIMOUS 1418
MS DAKITCH MDK QUEEN EVA 58C
MS DAKITCH 335 QUEEN M

VISIONTOPLINE ROYAL STOCKMAN
VISION EDELLA 665
SAV NET WORTH 4200
SIK QUEEN M 2246825



Actual BW	Adj. WW	WW Ratio
74	870	105

	CED	BW	WW	YW	MILK	MARB	REA	FAT	\$M	%B	\$C
EPD	7	2.2	70	120	24	--	--	--	63	--	--
%	45	75	30	40	70	--	--	--	55	--	--

Here is an attractive made herd sire prospect that combines rib and muscle shape in an attractive package. You will want to keep all his females!
Twin to lot 27

D
K 28

DAKITCH 58C STANDOUT 62L

REG # AAA Tattoo: 62L DOB: 01/31/2023

MUSGRAVE 316 STUNNER
B/D RICE STANDOUT 9065
ACA MIGNOLA 4536

LD CAPITALIST 316
MCATL BLACKBIRD 831-1378
EXAR CONSOLIDATE 2081B
SCR MIGNOLA 61500

VISION UNANIMOUS 1418
MS DAKITCH MDK QUEEN EVA 58C
MS DAKITCH 335 QUEEN M

VISIONTOPLINE ROYAL STOCKMAN
VISION EDELLA 665
SAV NET WORTH 4200
SIK QUEEN M 2246825



Actual BW	Adj. WW	WW Ratio
70	884	107

	CED	BW	WW	YW	MILK	MARB	REA	FAT	\$M	%B	\$C
EPD	7	2.2	70	120	24	--	--	--	63	--	--
%	45	75	30	40	70	--	--	--	55	--	--

Flat shouldered, big level top, thick ended, deep bodied bull with a great EPD profile...
What more do you want? You want to sire a consistent calf crop make sure you take a look at these two brothers.
Twin to lot 26





D
K **29** **DAKITCH 136H GROWTH FUND 78L**

REG # AAA Tattoo: 78L DOB: 02/20/2023

BASIN PAYWEIGHT 1682
DEER VALLEY GROWTH FUND
DEER VALLEY RITA 36113

BASIN PAYWEIGHT 006S
21AR O LASS 7017
PLATTEMERE WEIGH UP K360
DEER VALLEY RITA 9457

BAR-E-L HERCULES 89E
MS DAKITCH 118Z BARBIE 136H
MS DAKITCH 29X BARBIE 118Z

BAR-E-L MR TIBBS 61C
BAR-E-L MAGNOLIA 82W
DA KITCH 30P TRUE GRIT 42X
MS DAKITCH 5S BARBIE 29X



Actual BW	Adj. WW	WW Ratio
73	763	92

	CED	BW	WW	YW	MILK	MARB	REA	FAT	\$M	%B	\$C
EPD	8	1.4	60	115	28	0.47	0.67	0.031	67	143	252
%	35	55	60	45	40	75	50	75	45	50	50

Sound made, big topped bull that is smooth shouldered.

Maternal Brother
to lot 29
High selling Angus
from 2023 Sale



D
K **30** **DAKITCH 148C GROWTH FUND 123L**

REG # AAA Tattoo: 123L DOB: 03/11/2023

BASIN PAYWEIGHT 1682
DEER VALLEY GROWTH FUND
DEER VALLEY RITA 36113

BASIN PAYWEIGHT 006S
21AR O LASS 7017
PLATTEMERE WEIGH UP K360
DEER VALLEY RITA 9457

DAKITCH 23P PIONEER 81Z
MS DAKITCH 9Z BLACKCAP 148C
MS 906 BLACKCAP 9Z

SAV PIONEER 7301
MS DAKITCH BARBIE 23P
HF PROWLER 43U
DH BLACKCAP 906



Actual BW	Adj. WW	WW Ratio
70	884	107

	CED	BW	WW	YW	MILK	MARB	REA	FAT	\$M	%B	\$C
EPD	10	0.4	90	154	35	0.42	0.61	0.038	55	155	256
%	20	35	3	3	10	80	0.61	85	75	35	45

Very high quality complete Growth Fund son, big birth to weaning spread. Growth Fund cattle have been highly sought after the past few years.



Maternal Brother
to lot 30





31

D K 31 **DAKITCH 115J GUARANTEE 32L**
 REG # AAA Tattoo: 32L DOB: 01/15/2023

CONNEALY PAYRAISE BASIN PAYWEIGHT 1682
 CRAWFORD GUARANTEE 9137 PRIDE FAIR OF CONANGA 351
 CRAWFORD MS ARMORY D40 CONNEAALY ARMORY
 GAR NEW DAY N2290

BAR-E-L HERCULES 89E BAR-E-L MR TIBBS 61C
 MS DAKITICH 19F QUEENEVA 115J BAR-E-L MAGNOLIA 82W
 MS DAKITICH 158D QUEENEVA 19F EATHINGTON SUB-ZERO
 MS DAKITICH QUEEN EVA 158D



Actual BW	Adj. WW	WW Ratio
83	937	113

	CED	BW	WW	YW	MILK	MARB	REA	FAT	\$M	%B	\$C
EPD	1	2.7	74	135	30	--	--	--	74	--	--
%	90	80	25	15	25	--	--	--	25	--	--

Heifer Bull! A typical guarantee son here long sided, super thick, wide based

D K 32 **DAKITCH 121J GUARANTEE 38L**
 REG # AAA Tattoo: 38L DOB: 01/17/2023

CONNEALY PAYRAISE BASIN PAYWEIGHT 1682
 CRAWFORD GUARANTEE 9137 PRIDE FAIR OF CONANGA 351
 CRAWFORD MS ARMORY D40 CONNEAALY ARMORY
 GAR NEW DAY N2290

BAR-E-L HERCULES 89E BAR-E-L MR TIBBS 61C
 MS DAKITICH 111E BARB 121J BAR-E-L MAGNOLIA 82W
 MS DAKITICH 79Y BARB 111E VISION UNANIMOUS 1418
 MS DAKITICH BARB 79Y



Actual BW	Adj. WW	WW Ratio
82	967	117

	CED	BW	WW	YW	MILK	MARB	REA	FAT	\$M	%B	\$C
EPD	3	3.4	79	141	28	--	--	--	79	--	--
%	75	90	15	10	40	--	--	--	15	--	--

Aside from his EPD profile, phenotypically he is heavy structured, deep sided bull that is massive in his muscle expression. His mother hit it out of the park on her first calf weaning him off at a whopping 967 lbs!



32

D K 33 **DAKITCH MDK41J GUARANTEE 31L**
 REG # AAA Tattoo: 31L DOB: 01/11/2023

CONNEALY PAYRAISE BASIN PAYWEIGHT 1682
 CRAWFORD GUARANTEE 9137 PRIDE FAIR OF CONANGA 351
 CRAWFORD MS ARMORY D40 CONNEAALY ARMORY
 GAR NEW DAY N2290

BAR-E-L CATALYST 58C SAV INTERNATIONAL 2020
 MS DAKITICH MDK1749 EMILY 176G BAR-E-L MAGNOLIA 82W
 RCL EMILY 1749 SAV BRILLIANCE 8077
 RCL EMILY 7497



Actual BW	Adj. WW	WW Ratio
75	844	102

	CED	BW	WW	YW	MILK	MARB	REA	FAT	\$M	%B	\$C
EPD	7	1.4	72	134	30	--	--	--	79	--	--
%	45	55	25	20	25	--	--	--	15	--	--

A super high quality bull that is correct in his design with added muscle shape



33



34

D **34** **DAKITCH 47G GUARANTEE 33L**

REG # AAA Tattoo: 33L DOB: 01/15/2023

CONNEALY PAYRAISE
CRAWFORD GUARANTEE 9137
CRAWFORD MS ARMORY D40

BASIN PAYWEIGHT 1682
PRIDE FAIR OF CONANGA 351
CONNEAALY ARMORY
GAR NEW DAY N2290

SAV NET WORTH 4200
MS DAKITCH 759 EMILY 47G
RCL EMILY 0759

SAV S180 TRAVELER 004
SAV MAY 2410
SAV BISMARCK 5682
RCL EMILY 7597



Actual BW	Adj. WW	WW Ratio
87	822	99

	CED	BW	WW	YW	MILK	MARB	REA	FAT	\$M	%B	\$C
EPD	4	3.4	61	122	28	0.42	0.51	0.029	57	136	233
%	70	90	60	35	40	80	70	75	70	60	70

33L is sure to be a crowd favorite sale day! There is no doubt he will sire calves that will wean off heavy. If you have cattle that you want to make thicker, stouter and heavier 33L will get it done!

Maternal Brother
to lot 34



Maternal Brother
to lot 35

D **35** **DAKITCH 149E GUARANTEE 25L**

REG # AAA Tattoo: 25L DOB: 01/09/2023

CONNEALY PAYRAISE
CRAWFORD GUARANTEE 9137
CRAWFORD MS ARMORY D40

BASIN PAYWEIGHT 1682
PRIDE FAIR OF CONANGA 351
CONNEAALY ARMORY
GAR NEW DAY N2290

DAKITCH 23P PIONEER 81Z
MS DAKITCH 52Y QUEEN EVA 149E
MS DAKITCH 111N EVA 52Y

SAV PIONEER 7301
MS DAKITCH BARBIE 23P
SAV PROVIDENCE 6922
MS DAKITCH EVA 111N



Actual BW	Adj. WW	WW Ratio
75	791	96

	CED	BW	WW	YW	MILK	MARB	REA	FAT	\$M	%B	\$C
EPD	11	0.0	58	112	27	0.30	0.43	0.018	65	118	218
%	15	25	70	50	27	90	80	60	50	85	80

Deep ribbed, soggy made type of bull.



35



D 36 **DAKITCH 146H GUARANTEE 116L**
 REG # AAA 20830069 Tattoo: 116L DOB: 03/09/2023

CRAWFORD GUARANTEE 9137
 LLW CARDINAL GUARANTEE 978J
 CARDINAL LLW PURE PRIDE 78G

CONNEALY PAYRAISE
 CRAWFORD MS ARMORY D40
 KOUPAL ADVANCE 28
 MUSGRAVE PURE PRIDE 78

BAR-E-L HERCULES 89E
 MS DAKITCH 109A EILEEN 146H
 MS DAKITCH EILEENMERE 109A

BAR-E-L MR TIBBS 61C
 BAR-E-L MAGNOLIA 82W
 TB DOMINATOR 818
 MS DAKITCH EILEENMERE 7U

Heifer Bull Candidate



Actual BW	Adj. WW	WW Ratio
70	774	109

	CED	BW	WW	YW	MILK	MARB	REA	FAT	\$M	%B	\$C
EPD	5	2.1	73	122	26	0.40	0.41	0.020	74	118	227
%	60	70	25	35	55	80	85	60	25	85	75

Long bodied, smooth made bull with moderate BW to high growth.



Maternal Brother to lot 36

D 37 **DAKITCH 81H OUTSIDER 138L**
 REG # AAA 20830066 Tattoo: 138L DOB: 03/21/2023

CLF OUTSIDER 01B
 CLF OUTSIDER 37H
 TOP LINE TRIPLE K LADY 8055

BARSTOW CASH
 GAMBLES SHADOW 9102
 COLBURN PRIMO 5153
 TOP LINE LADY 0411

EATHINGTON SUB ZERO
 MS DAKITCH 100B EILEEN 81H
 MS DAKITCH EILEENMERE 100B

CONNEALY CAPITALIST
 KP MISS PROVEN QUEEN 21
 BAR-E-L IRONCLAD 177Y
 MS DAKITCH EILEENMERE 126X

Heifer Bull Candidate



Actual BW	Adj. WW	WW Ratio
70	831	117

	CED	BW	WW	YW	MILK	MARB	REA	FAT	\$M	%B	\$C
EPD	6	0.6	58	88	24	--	--	--	72	--	--
%	55	35	70	90	70	--	--	--	30	--	--

Long extended bull that should sire low bw calves.



Maternal Brother to lot 37



D 38 **DAKITCH MDK 6G OUTSIDER 169L**
 REG # AAA 20830064 Tattoo: 169L DOB: 04/14/2023

CLF OUTSIDER 01B
 CLF OUTSIDER 37H
 TOP LINE TRIPLE K LADY 8055

BARSTOW CASH
 GAMBLES SHADOW 9102
 COLBURN PRIMO 5153
 TOP LINE LADY 0411

EATHINGTON SUB ZERO
 MS DAKITCH MDK 16E LASS 6G
 MS DAKITCH MDK 86B LASS 16E

CONNEALY CAPITALIST
 KP MISS PROVEN QUEEN 21
 BAR-E-L CATALYST 58C
 MS DAKITCH MDK LASS 86B

Heifer Bull Candidate



Actual BW	Adj. WW	WW Ratio
83	836	118

	CED	BW	WW	YW	MILK	MARB	REA	FAT	\$M	%B	\$C
EPD	5	1.7	61	91	26	--	--	--	84	--	--
%	60	65	60	85	55	--	--	--	10	--	--

Youngest bull in the offering. Thick square built bull, with a great hair coat.



D K 39 DAKITCH MDK 156F COUNTY O 50L

REG# ASA 4216150 Tattoo: 50L DOB: 01/24/2023
 1/2 SM 1/2 AN

W.C LOADED UP 1119Y
 GEEFF COUNTY O
 RUBY NFF RHYTHM 475B

REMINGTON LOCK N LOAS 54U
 AUBREYS BLACK BLAZE III
 AJE/PB MONTECITO 63W
 RHYTHM 418P

BAR-E-L CATALYST 58C
 MS DAKITCH MDK16X QUEEN 156F
 MS DAKITCH 335 QUEEN M 16X

SAV INTERNATIONAL 2020
 BAR-E-L MAGNOLIA 82W
 SAV NET WORTH 4200
 SIK QUEEN M 2246825

Actual BW	Adj. WW	WW Ratio
90	954	--

CE	BW	WW	YW	MILK	MWW	FAT	REA	MARB	API\$	TI\$
7.8	1.0	63	96	14	45	-0.035	0.61	0.27	105	68

What a way to start off our Sim-Angus Division for our first time. 50L is a true standout bull in the pen. Loaded with power and muscle, in a super smooth made attractive package. This guy should have lots of stars next to him sale day.

D K 40 DAKITCH MDK 174E COUNTY O 58L

REG # ASA Tattoo: 58L DOB: 01/30/2023
 1/2 SM 1/2 AN

W.C LOADED UP 1119Y
 GEEFF COUNTY O
 RUBY NFF RHYTHM 475B

REMINGTON LOCK N LOAS 54U
 AUBREYS BLACK BLAZE III
 AJE/PB MONTECITO 63W
 RHYTHM 418P

BAR-E-L PORTFOLIO 151C
 MS DAKITCH MDK 9X MINDY 174E
 MS DAKITCH MDK 52U BARBIE 9X

BUSHS ROCK SOLID 983
 WILGOR 3W MARY 32Z
 SAV PIONEER 7301
 MS DAKTICH MDK MINDY 52U

Actual BW	Adj. WW	WW Ratio
85	856	--

CE	BW	WW	YW	MILK	MWW	FAT	REA	MARB	API\$	TI\$
7.2	2.0	70	104	14	66	-0.056	0.74	0.19	110	67

Long made, smooth bodied, attractive bull. Looks great on the move



D K 41 DAKITCH MEK 203A COUNTY O 49L

REG # ASA 4216148 Tattoo: 49L DOB: 01/23/2023
 1/2 SM 1/4 AN 1/4 HP

W/C LOADED UP 1119Y
 GEFF COUNTY O
 RUBY NFF RHYTHM 475B

REMINGTON LOCK N LOAS 54U
 AUBREYS BLACK BLAZE III
 AJE/PB MONTECITO 63W
 RHYTHM 418P

PB ANGUS
 MS DAKITCH MEK 203A
 PB HEREFORD

Actual BW	Adj. WW	WW Ratio
91	890	--

CE	BW	WW	YW	MILK	MWW	FAT	REA	MARB	API\$	TIS
7.4	1.5	59	90	14	43	-0.044	0.59	0.12	95	61

This bull will add pounds and length to anyone calf crop. Baldie calves are topping the market across the USA, Get on board with this guy!



**Supreme Champion Female
 Northern Lights Jackpot Show
 August 2023
 Bred and Owned By Dawson Kitchell
 Sired By County O**

**Watch for more things to come from
 Dawson up and coming Simmental herd!**



**Geff County O
 Reference Sire to Lots 38-40**



D
K 42

DAKITCH 46A STANDOUT 53L

REG # AAA Tattoo: 53L DOB: 01/27/2023

MUSGRAVE 316 STUNNER
B/D RICE STANDOUT 9065
ACA MIGNOLA 4536

LD CAPITALIST 316
MCATL BLACKBIRD 831-1378
EXAR CONSOLIDATE 2081B
SCR MIGNOLA 61500

BELVIN TRES MARIAS PATRON 205
MS DAKITCH 57T BARBIE 46A
MS DAKITCH BARBIE 57T

ALSTON 5384 CATRIEL F
TRES MARIAS 6764 ROSANEGRA 5214
TC FREEDOM 104
MS DAKITCH BARBIE 64L

Actual BW	Adj. WW	WW Ratio
82	867	105

CED	BW	WW	YW	SC	MILK	MARB	REA	FAT	\$M	\$B	\$C

This guys DNA didn't come back the way we wanted it to, this bull sells with NO reg papers. But all things aside this is one of the best black hid bulls by far. Put him on your color cows and watch the money start rolling in!



D
K 43

DAKITCH 215C 99L

REG # NA Tattoo: 99L DOB: 02/28/2023

NMR MATERNAL MADE
GOOD AS IT GETS
MEYER FANNY 267Z

BPF MERCEDES BENZ 131U
NMR 0-04X
MR HOC BROKER
AKERS SWAN 3294

HEREFORD
MS DAKITCH 215C
MS DAKITCH 95R BLACKBIRD 76A

TB DOMINATOR 818
MS DAKITCH BLACKBIRD 95R

Actual BW	Actual WW	WW Ratio
84		--

To all the baldie lovers, this is a bull for you! Hybrid vigor runs deep in his veins!



Commercial open Heifers

SELLING IN GROUPS ACCORDING TO TAG COLOR

**Heifers are grouped according to sire. Both bulls ran together on pasture
High bidder can take one or all in a group**

Group 1 Blue Tags Sired by 978J or 37H Born March 14-25

**126L
131L
145L
146L**

LLW CARDINAL GUARANTEE 978J

REG # AAA 20209052

DOB: 02/15/2021

CONNEALY PAYRAISE
CRAWFORD GUARANTEE 9137
CRAWFORD MS ARMORY D401

BASIN PAYWEIGHT 1682
PRIDE FAIR OF CONANGA 351
CONNEAALY ARMORY
GAR NEW DAY N2290

KOUPAL ADVANCE 28
CARDINAL LLW PURE PRIDE 78G
MUSGRAVE PURE PRIDE 78

KOUPAL JUNEAU 797
KOUPAL EBONETTE 734
MUSGRAVE SKY HIGH 1535
SANDPOINT PURE PRIDE 2166

CLF OUTSIDER 37H

REG # AAA 19993944

DOB: 03/10/2020

BARSTOW CASH
CLF OUTSIDER 01B
GAMBLES SHADOW 9102

SITZ DASH 10277
BARSTOW QUEEN W16
BC EAGLE EYE 110-7
CHAMPION HILL SHADOW

COLBURN PRIMO 5153
TOP LINE TRIPLE K LADY 8055
TOP LINE LADY 0411

DAMERON FIRST CLASS
SILVEIRAS SARAS DREAM 1339
NORTHERN IMPROVEMENT 4480 GF
OBAR GAMBLES LADY 1056



Reference Sire - 978J

Group 2 Purple Tags Sired by 135H & 89E Born March 19-30

**134L
137L
149L
153L
159L**

DAKITCH 68C COWBOY 135H

REG # AAA 19926089

DOB: 03/22/2020

HA COWBOY UP 5405
BULLERMAN COWBOY UP 8081
BULLERMAN QUEEN 1456

HA OUTSIDE 3008
HA BLACKCAP LADY 1602
SAV PRIORITY 7283
BAF QUEEN 1109

SAV NET WORTH 4200
MS DAKITCH 57T BARBIE 68C
MS DAKITCH BARBIE 57T

SAV 8180 TRAVELER 004
SAV MAY 2410
TC FREEDOM 104
MS DAKITCH BARBIE 64L

BAR-E-L HERCULES 89E

REG # AAA 19203308

DOB: 02/14/2017

SAV INTERNATIONAL 0338
BAR-E-L MR TIBBS 61C
HF TIBBIE 115S

SAV HARVESTOR 0338
SAV EMBLYNETTE 5483
HF POWER SOURCE 94M
HF TIBBIE 90N

SOUTHLAND FREEDOM 37T
BAR-E-L MAGNOLIA 82W
NAR-E-L MAGNOLIA 15T

TC FREEDOM 104
SOUTHLAND ROSIE 96M
SAV 004 DENSITY 4336
BAR-E-L MAGNOLIA 184R



Reference Sire - 135H

**Group 3 Yellow tags (reg papers could be provided)
79L - DOB 02/20/2023 - Sire - B/D Rice Standout 9065
101L - DOB 03/01/2023 - Sire - B/D Rice Standout 9065
124L - DOB 03/12/2023 - Sire - SS Brickyard**

Bred Hereford Cows

D44 MS DAKITCH DMK 40H BELLA 94K

REG # P44344041 Tattoo: DMK 94K DOB: 02/25/2022

PYRAMID FRONT RANGE 6015 ET
CRR 6015 FRONT RANGE 9135
CRR 88X ECLIPSE 522

PYRAMID 16W 110T 9116
FHF 408 RITA 21W
NJW 98S R117 RIBEYE 88X ET
CRR 4037 ECLIPSE 808

TH FRONTIER 174E
MS DAKITCH DMK 11A BELLA 40H
MS DAKITCH 95S BELLA 11A

TH 403A 475Z PIONEER 358C ET
FTF TRUSTING LADY 312A
TH 12L 63N TUNDRA 62T
MS DAKITCH LADY MASTER 95S

CED	BW	WW	YW	SC	MILK	MARB	FAT	REA	MARB	CHB
1.4	4.7	59	96	0.7	31	61	0.021	0.41	-0.16	93

Mostly likely bred Angus due April 2024

D45 MC JASMINEJ17

REG # P44241351 Tattoo: J17 DOB: 02/23/2021

R LEADER 6964
/S MANDATE 66589
S LADY DOMINO 0158X

HYALITE ON TARGET 936
R MISS REVOLUTION 1009
SHF RIB EYE M326 R117
S LADY DOMINO

RF LOGICAL CHOICE 55W
MC LOGICAL GIRL C6
MC TENDER GIRL W27

KJ C&L J119 LOGIC 023R ET
LLF PROSPECT SUE H5
SHF TENDERLOIN R117 T06
MC SPICE GIRL S20

CED	BW	WW	YW	SC	MILK	MARB	FAT	REA	MARB	CHB
1.2	2.0	61	96	1.2	24	54	0.041	0.21	0.12	103

Bred to Rangeline 183F Masterplan 92K - Due April 2024

D46 MS DAKITCH 400U PRIMROSE 117G

REG # P44017400 Tattoo: DHK 117G DOB: 02/25/2019

KJ 968R POLLED SOLUTION 668ZET
CRR 668Z COMMITMENT 654
CRR 719 ECLIPSE 101

MSU TCF REVOLUTION 4R
KJ 2403 ROBINETTE 968R
TH 122 71L VICTOR 719T
CRR 63N ECLIPSE 982

NJW FHF 9710 TANK 45P
TH 605F 45P PRIMROSE 400U ET
YY 125Y PRIMROSE 605F

FHF 8403 STARBUCK 19H
GV 579 VICTORIA 9710
DAVIS 81W TOP CAT ET 125Y
CFCW MS ENERGZR LECTRC

CED	BW	WW	YW	SC	MILK	MARB	FAT	REA	MARB	CHB
-5.5	5.7	59	94	1.0	25	54	0.021	0.37	-0.10	89

Bred to Rangeline 183F Masterplan 92K - Due April 2024

D47 MS DAKITCH MDK JASMINE 51E ET

REG # P43807189 Tattoo: MDK 51E DOB: 02/07/2017

TH 122 71L VICTOR 719T
CRR 719 CATAPULT 109
CRR 4037 ECLIPSE 808

DRF JWR PRINCE VICTOR 71H
KBKR 19D DOMINETTE 122
THM DURANGO 4037
CRR 420 ECLIPSE 688

DAKITCH TANK MASTER 57P
MS DAKITCH LADY MASTER 95S
MS DAKITCH DOMINO 41N

FHF 8403 STARBUCK 19H
MS DAKITCH TRISH 93L
FHF CL DOMINO 614R 77U
MS DAKITCH EXILE 61D

CED	BW	WW	YW	SC	MILK	MARB	FAT	REA	MARB	CHB
3.2	2.9	55	84	0.7	33	60	-0.029	0.36	-0.14	85

Bred to Rangeline 6153 Blueprint 32J for an April 29, 2024 calf



Semen Available



DAKITCH MDK 181E STRATEGY 69H

REG # 44180262 Homozygous Polled DOB: 02/23/2020
DLF,HYF,IEF,MSUDEF,MDF,DBF

SCHU-LAR ON TARGET 22S
KCF BENNETT STRATEGY Z303 ET
KCF MISS REVOLUTION X338 ET

SCHU-LAR 5N OF 9L 3008
SCHU-LAR 208 OF 1H 121 ET
MSU TCF REVOLUTION 4R
JW 718 VICTORIA 9106

EXR CROSSROADS 466 ET
MS DAKITCH MDK Y869 DIVA 181E
E 337U DIVA Y869

NJW 73S M326 TRUST 100W ET
TH 90W 755T MS DOM 28Z
HARVIE SAFNBFI COLATERAL 337U
E M211 LADY RANGER U869



Actual BW	Adj. WW	WW Ratio
76	731	124

	CE	BW	WW	YW	MILK	M&G	FAT	REA	MARB	BMI \$	CHB \$
EPD	1.8	3.5	78	122	34	73	0.031	0.77	0.15	313	131
%	64	68	1	2	14	2	62	5	39	79	24

If you like them dark red short marked and pigmented 69H will do it!

69H Ratio's 102 on WW, 105 YW, 104 REA

His mother 181E Ratio's 100 on BW, 110 WW adn 107 YW

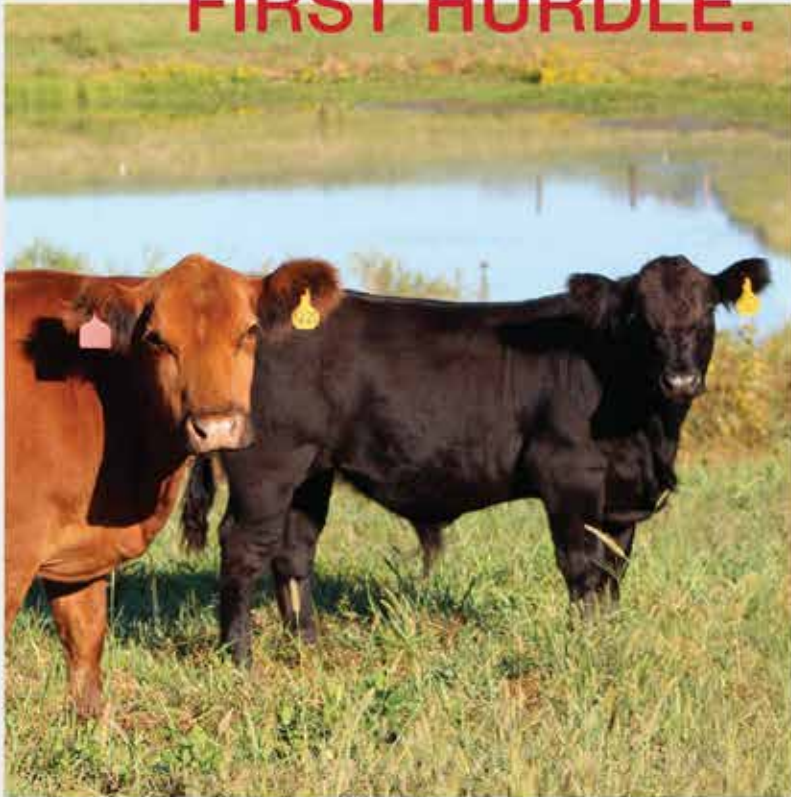
**\$30/Unit
\$50/Cert**

Owned with William B Isaacson

Progeny



GET OVER THE FIRST HURDLE.



The critical step in setting up your beef herd includes a high-quality, palatable Purina® Wind & Rain® Cattle Mineral that offers optimal absorption and best in class weatherization. Ensuring your herd has their mineral needs covered is the first step in getting over the hurdle to meet your performance goals.



Contact your local Purina Dealer or visit purinamills.com/cattle-feed to learn more.

©2022 Purina Animal Nutrition LLC. All rights reserved.

Contact Matthew Kitchell your local Purina dealer
 Available to order creep feed pellets, protein pellets, & mineral



That pretty much says it all.

What else can we tell you? How our show feed gives you an edge in competition when the margin for victory is razor-thin? But one look at our champions already told you that.

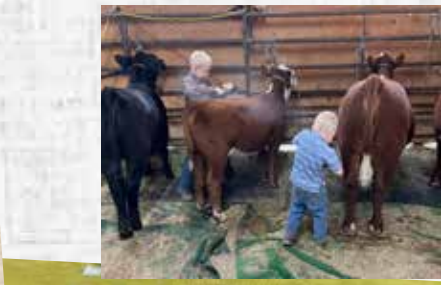
Animals speak louder than words.™

See all our winners at purinamills.com/winners

© 2020 Purina Animal Nutrition LLC. All rights reserved.

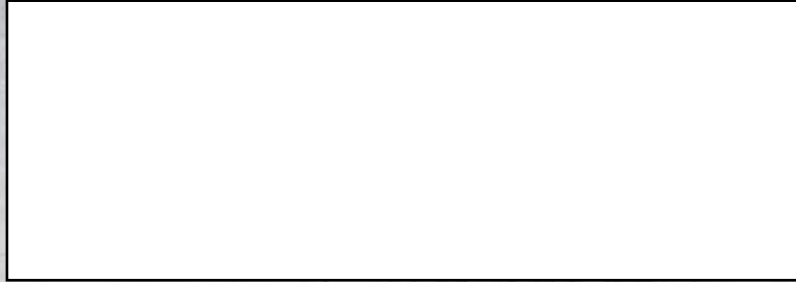


FEED GREATNESS®





DaKitch Farms
1997 355th St
Ada, MN 56510



D
K

“Our Brand your success”
Hereford Angus Sim-Influence

1:00 pm Saturday, March 23, 2024 At the Farm Ada, MN